

UNIVERSITY HIGHLIGHTS



At the University of Southampton you will be part of a vibrant, international community of students and academics, who will inspire, challenge and support you. As a world leader in academic excellence and research, you will have the opportunity to gain a truly global career.

You can explore new cultures through study abroad opportunities and international student societies, get advice from our global alumni community, and make friends with people from a multitude of backgrounds.

6 campuses across
Southampton and Winchester,
close to both city centres

Top 20 UK University
11th in THE World University Rankings 2024
17th in Complete University Guide 2024
20th overall in Guardian University Guide 2024



Ranked 81st
of universities
worldwide

QS World University
Rankings 2024

13th
in the UK

QS World University Rankings for
Sustainability 2024

**Rated the
4th best UK city to
live and work in**

OneFamily finance



Home to the world's leading
University **Business Incubator**

SETsquared ranked no. 1 by UBI Global



Over **400** clubs
and societies

Our students
come from over
130 countries



Over 160 years
of history

1862 ←→ **2024**



SUBJECT HIGHLIGHTS

A degree from the University of Southampton enables you to develop critical thinking and independent learning skills, as well as hands-on experience, to become a future leader and decision maker.

With over 350 courses to choose from, you can customise your degree and explore beyond your chosen subject. Southampton has the resources, staff and support you need to learn in your own way and get the most out of your degree.

Our experts across the University are leaders in their fields, offering you the chance to learn about world-changing research as it happens.



Southampton Business School is accredited by prestigious international organisations including



Top 10 in the UK for
Marketing



Complete University Guide, 2024



World top 40/ 7th in the UK for
Statistics and Operational Research

QS World University Rankings by Subject, 2023



Law students

can access careers fairs, pro bono opportunities, and prestigious marshalling schemes and prizes



4th in the UK for Aeronautical and Aerospace Engineering

The Complete University Guide, 2024

6th in the world for Nursing

QS World University Rankings by Subject, 2023

Students can get involved in the in-house **fashion magazine, FEAST**



Ranked 8th for **Art & Design** research quality

Complete University Guide, 2024



WSA have a range of industry partnerships and memberships including the **UK Fashion & Textile Association**

3rd

in the UK for **Electrical and Electronic Engineering**



Guardian University Guide, 2024

Accredited by the Royal Society of Chemistry (RSC), helping students to become Chartered Chemists



4th in the UK for **Mechanical Engineering**



The Times and The Sunday Times Good University Guide, 2024



Psychology degrees are accredited by the British Psychological Society

Carry out fieldwork on R.V. Callista, a 19.75m catamaran designed and equipped for research

World top 60 for Physics and Astronomy



QS World University Rankings by Subject, 2023

CAMPUSES

The University has six campuses in Southampton, one in Winchester and Malaysia, each with its own distinct character and community. **ONCAMPUS** Southampton is located a short walk from the city centre and the University's Highfield Campus.



Boldrewood Innovation Campus

Boldrewood is the newest campus at the University, located a five minute walk away from the Highfield Campus and near the Southampton Common. It's home to Southampton Business School as well as our engineering and maritime engineering courses. Here you'll find a number of world-class testing and research laboratories, including a 138m towing tank, the £48m UKCRIC National Infrastructure Laboratory (NIL), our Jaguar Land Rover driving simulator and our Boeing flight simulators.

Avenue Campus

Another five minute walk from Highfield and on the edge of the Southampton Common, beautiful and historic Avenue Campus is a hub for most humanities subjects.

Avenue Campus has a range of innovative and contemporary facilities that allow students to study and research through cutting edge technology, like virtual reality, 3D scanners and printers and a 360 degree fully immersive audio-visual centre. Avenue is also home to a state-of-the-art £3m Archaeology building, lecture theatres and the Avenue Café.

Waterfront Campus

Located on Southampton's waterfront at the National Oceanography Centre Southampton (NOCS), this campus is close to the city centre and is just a short bus ride away from the Highfield Campus.

NOCS hosts one of the world's largest groups of scientists and engineers devoted to research, teaching and technology development in ocean and earth science. The campus is comprehensively equipped with an extensive array of instrumentation and laboratory facilities including the Coral Reef Laboratory and research aquarium.

Highfield Campus

Highfield is the largest campus of the University, home to both historic buildings and cutting-edge research and teaching facilities - it is the academic heart of the University. Highfield has seen recent investment in the Centenary Building which houses an 80-seat Harvard lecture theatre, private pod study spaces, and bookable seminar rooms.

Highfield is a hub of activity including social events, sports facilities, the Students' Union and plenty of beautiful green spaces. This makes it the perfect place to study, relax, and socialise with new friends as the space has shops, bars, a cinema and gym - all in one place.

University Hospital Southampton (UHS)

Located in the north-west of the city, the hospital has good transport links to the city centre and Highfield Campus. Medicine students have the majority of their classes in the South Academic Block. This is where you'll find; the Health Services Library, clinical skills rooms, Centre for Learning Anatomical Science (CLAS), lecture theatres and research labs, a Major Trauma Centre (MTC), and the Centre for Cancer Immunology (CCI).

Winchester School of Art (WSA)

Located in the centre of the historic city of Winchester, nestled in green parkland, WSA is a vibrant hub for students in fine art, games design, fashion and textile design, fashion marketing, creative computing and graphic communication.

With creative ambition at its core, WSA supports students with cutting-edge resources including specialist computer suites, photography studios, laser cutting, 3D printing, industrial sewing and knitting machines, screen printing and more.

The campus is just a 20 minute train journey to Southampton and there are regular bus services between Winchester and Southampton.



HOW ONCAMPUS WORKS

Our programmes at ONCAMPUS Southampton are designed for international students who do not meet the requirements for direct entry to the University of Southampton. You will benefit from the support we offer in preparing you to advance to the University.



Improve your English language skills

- Academic writing skills
- Academic reading skills
- Presentation and discussion skills
- Listening and note taking

Improve academic grades and study skills

- Gain additional year of study, equivalent to 13th year of UK education
- Further your academic knowledge to meet university entry requirements
- Achieve the grades required for undergraduate study
- Learn the study skills essential for success in UK universities
- Additional research study skills for Master's students

Expert university progression support

- Expert guidance on which degree to advance to
- One-to-one support sessions
- Faculty visits and meetings

Advance to university degree

ONCAMPUS gives you...

Outstanding teaching and support

Through every step of your journey with us, you will be aided by highly qualified teachers and support staff, both inside and outside the classroom.

Your personal tutor will meet with you regularly to ensure your progress in passing the programme and advancing to your chosen degree.

Your personal tutor is also there to help you with any issues and questions you might have inside or outside the classroom.

A proven track record of success

ONCAMPUS is part of the Cambridge Education Group, one of the UK's leading university pathway providers since 1952. The Cambridge Education Group was the first private institution to offer university foundation programmes in the UK in 1985, and successfully prepares thousands of students for the country's top universities every year.

Part of the University from day one

The ONCAMPUS Centre is located a short bus ride from the main University campus, in close proximity to all of its facilities.

You will receive a University student card, and with it, you will have access to the University's facilities, clubs and societies over the duration of your ONCAMPUS programme.

You will meet your course leader at the University before you start your degree, as well as have the opportunity to try out some of the excellent facilities.



YOUR ROUTE TO A DEGREE AT THE UNIVERSITY OF SOUTHAMPTON

ONCAMPUS Southampton offers guaranteed progression* to a wide range of undergraduate and master's degrees at the University of Southampton, on successful completion of our programmes.

*subject to meeting the specified criteria.



UNDERGRADUATE DEGREES YOU CAN PROGRESS TO

There are a wide range of degrees available for progression, some of which are given below. For a complete list please visit www.oncampus.global/southampton

View **full list** of the courses you can advance on to



Guaranteed progression is subject to meeting the specified entry criteria

Business, Economics, Finance and Management pathway

Minimum progression requirements 60% overall (in academic modules) + **ONCAMPUS Test of English (OCTOE)** at 65%

BSc Accounting and Finance 60% in UFP Advanced Mathematics module required	BSc Economics and Business Management 60% in UFP Advanced Mathematics module required
BSc Business Analytics 60% in UFP Advanced Mathematics module required	BSc Economics and Finance 60% in UFP Advanced Mathematics module required
BSc Business Entrepreneurship 60% in UFP Advanced Mathematics module required	BSc Economics with Data Science 70% in UFP Advanced Mathematics module required
BSc Business Management ¹ 60% in UFP Advanced Mathematics module required	BSc Economics and Philosophy 60% in UFP Advanced Mathematics module required
BSc Economics 60% in UFP Advanced Mathematics module required	BSc Finance and Financial Technology 70% in UFP Advanced Mathematics module required
BSc Economics and Accounting 60% in UFP Advanced Mathematics module required	BSc Marketing 60% in UFP Advanced Mathematics module required
BSc Economics and Actuarial Science 70% in UFP Advanced Mathematics module required	BSc Politics and Economics 60% in UFP Advanced Mathematics module required

Art and Design pathway

Minimum progression requirements 60% overall (in academic modules) + **ONCAMPUS Test of English (OCTOE)** at 65%

BA Fashion Design Portfolio review required	BA Games Design and Art Portfolio review required
BA Fashion Marketing with Management	BA Graphic Arts Portfolio review required
BA Fine Art Portfolio review required	BA Textile Design Portfolio review required

Life Sciences pathway

Minimum progression requirements 60% overall (in academic modules) + **ONCAMPUS Test of English (OCTOE)** at 65%

BSc Adult Nursing	BSc Geology
BSc Audiology	BSc Marine Biology
BSc Biochemistry	BSc Mental Health Nursing
BSc Biology	BSc Oceanography
BSc Biology and Marine Biology	BSc Pharmacology
BSc Biomedical Sciences	BSc Psychology
BSc Geography	BSc Zoology

Humanities and Social Sciences pathway

Minimum progression requirements 60% overall (in academic modules) + **ONCAMPUS Test of English (OCTOE)** at 65%

BA Ancient History ¹ 60% in UFP essay based module	LLB International Legal Studies
BA Applied Linguistics and English Language 60% in UFP essay based module	BSc International Relations
BA Archaeology ¹	BA Languages and Contemporary European Studies 60% in UFP essay based module
BSc Criminology ¹	LLB Law ¹
BSc Education ¹	BA Modern History and Politics 60% in UFP essay based module
BA English ¹ 60% in UFP essay based module	BA Modern Languages (1 Language: French, German or Spanish) Additional modern foreign language evidence required
BA English Literature, Language and Linguistics 60% in UFP essay based module	BA Philosophy, Politics and Economics 60% in Advanced Maths
LLB European Legal Studies	BSc Politics ¹
BA Film and English ¹ 60% in UFP essay based module	BSc Sociology ¹
BA History 60% in UFP essay based module	

¹ This subject can be studied in combination with a variety of other subjects, visit the website for the full course list.

Engineering and Physical Sciences pathway

Minimum progression requirements 60% overall (in academic modules) + **ONCAMPUS Test of English (OCTOE)** at 65%

BEng Acoustical Engineering	BSc Mathematical Sciences
BEng Aeronautics and Astronautics	BSc Mathematics
BEng Aerospace Electronic Engineering	BSc Mathematics with Actuarial Science
BEng Chemical Engineering	BSc Mathematics with Computer Science
BSc Chemistry	BSc Mathematics with Finance
BEng Civil Engineering	BSc Mathematics, Operational Research, Statistics and Economics
BSc Computer Science	BEng Mechatronic Engineering
BEng Electrical and Electronic Engineering	BSc Physics
BEng Electrical Engineering	BEng Software Engineering
BEng Maritime Engineering	

MASTER'S DEGREES YOU CAN PROGRESS TO

There are a wide range of degrees available for progression, some of which are shown below. For a complete list please visit www.oncampus.global/southampton

View **full list** of the courses you can advance on to



Guaranteed progression is subject to achieving the progression criteria

Business, Economics, Finance and Management

Minimum progression requirements 60% overall (in academic modules) + Academic English Language Development (AELD) at 65%

MSc Accounting and Finance¹

MSc Human Resource Management

MSc Business Strategy and Innovation Management

MSc International Entrepreneurship and Management

MSc Digital Business

MSc International Management

MSc Digital Marketing

MA International Music Management

MSc Digital Strategy and Information Systems

MSc Marketing Management

MA Global Advertising and Branding

MSc Project Management

Humanities and Social Sciences

Minimum progression requirements 60% overall (in academic modules) + Academic English Language Development (AELD) at 65%

MA Applied Linguistics for Language Teaching

LLM International Commercial and Corporate Law

MSc Archaeology¹

MSc International Financial Markets

MSc Business and Heritage Management

MSc International Security and Risk

MSc Criminology

MA Languages and Cultures

MA Cultural Heritage Studies¹

LLM Laws

MSc Education

MA Maritime Law

MSc Education Management and Leadership

MPA Master of Public Administration

MSc Education Practice and Innovation

MSc Operational Research

MSc Environmental Consultancy

MA Philosophy

MA Film and Cultural Management

MSc Project Management

MA Film Studies

MSc Public Health¹

MSc Global Health

MSc Sociology and Social Policy

MA Global Literary Industries Management

MSc Sustainability

MA History

Life Sciences

Minimum progression requirements 60% overall (in academic modules) + Academic English Language Development (AELD) at 65%

MSc Applied Geographical Information Systems and Remote Sensing

MSc Genomics¹

MSc Audiology¹

MSc Neuroscience
Interview required

MSc Biodiversity and Conservation

MSc Oceanography

MSc Environmental Pollution Control

MSc Research Methods in Psychology

MSc Foundations of Clinical Psychology

Engineering and Physical Sciences

Minimum progression requirements 60% overall (in academic modules) + Academic English Language Development (AELD) at 65%

MSc Acoustical and Vibration Engineering

MSc Electrochemistry and Battery Technologies

MSc Actuarial Science

MSc Electronic Engineering

MSc Advanced Chemical Engineering

MSc Energy and Sustainability:
Energy, Resources and Climate Change¹

MSc Aerodynamics and Computation

MSc International Banking and Financial Studies

MSc Applied Statistics

MSc Internet of Things

MSc Artificial Intelligence
70% overall in academic modules

MSc Logistics and Supply Chain Analytics

MSc Biomedical Engineering

MSc Micro and Nanotechnology

MSc Business Analytics and Finance¹

MSc Microelectronics Systems Design

MSc Chemistry¹

MSc Mobile Communications and Smart Networking

MSc Civil Engineering

MSc Risk Management

MSc Computer Science
70% overall in academic modules

MSc Software Engineering
70% overall in academic modules

MSc Cyber Security

MSc Space Systems Engineering

MSc Data and Decision Analytics

MSc Systems, Control and Signal Processing

MSc Data Science
70% overall in academic modules

MSc Water Resources Management

MSc Economics

Art and Design

Minimum progression requirements 60% overall (in academic modules) + Academic English Language Development (AELD) at 65%

MA Communication Design
Portfolio review required

MA Fashion Marketing and Branding

MA Contemporary Curating

MA Fine Art
Portfolio review required

MA Design Management

MA Global Media Management

MA Fashion Design
Portfolio review required

MA Luxury Brand Management

MA Fashion Management

MA Textile Design
Portfolio review required

¹ This subject can be studied in combination with a variety of other subjects, visit the website for the full course list.

UNDERGRADUATE FOUNDATION PROGRAMME (UFP)

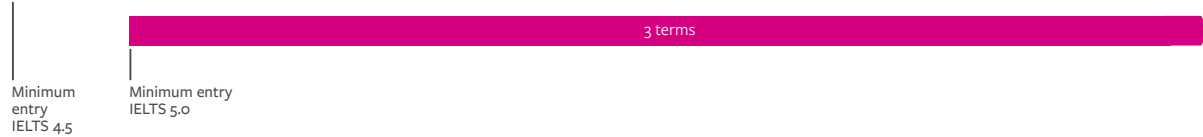
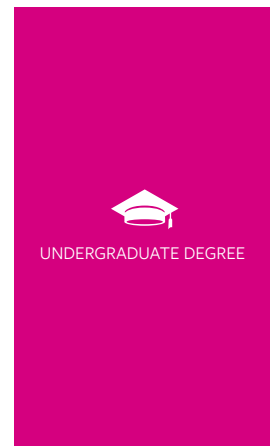
This programme ensures guaranteed progression* to a range of undergraduate degrees at the University of Southampton



Degree progression route

		Pathway	Modules				Pass mark* for guaranteed progression from academic modules	English level required for progression via internal assessment See website for specific subject progression requirements
Extended Undergraduate Foundation Programme (4 terms)	Undergraduate Foundation Programme (3 terms)	Business, Economics, Finance and Management	English	Economics and Finance	Advanced Maths for Business and Finance	Skills for Business	from 60%	OCTOE 65% (no component lower than 60%)
		Humanities and Social Sciences	English	Globalisation and International Relations	Human Interactions	Skills for Humanities and Social Sciences	from 60%	from OCTOE 65% (no component lower than 60%)
		Art and Design	English	Art Practice and Creative Design (double weighted module)		Contextual Studies	from 60%	OCTOE 65% (no component lower than 60%)
		Engineering and Physical Sciences	English	Pure Mathematics	Physics or Chemistry**	Skills for Science	from 60%	OCTOE 65% (no component lower than 60%)
		Life Sciences	English	Biology for Life Sciences	Chemistry for Life Sciences	Skills for Science	from 60%	from OCTOE 65% (no component lower than 60%)

***ONCAMPUS Pass Mark**
40% in academic modules
IELTS equivalent of 6.0 with no element below 5.5
Modules are decided based on chosen progression degree



Minimum entry IELTS 4.5

Minimum entry IELTS 5.0

For a full list of progression degrees see www.oncampus.global/southampton

Dates and fees

	Number of terms	Business and Humanities tuition fee	Engineering and Physical Sciences, Life Sciences and Art and Design tuition fee	Progressing to undergraduate degree starting in
10 June 2024 - 08 June 2025	4	£28,840	£33,040	September 2025
23 September 2024 - 08 June 2025	3	£23,175	£27,375	September 2025
23 September 2024 - 08 August 2025	4	£29,095	£33,295	September 2025
04 November 2024 - 08 August 2025	3.5	£26,135	£30,335	September 2025
06 January 2025 - 08 August 2025	3	£23,175	£27,375	September 2025

All programmes are subject to a £450 registration fee. An under-18 supplement applies to all students under the age of 18 at the start of their programme. For more details, please visit www.oncampus.global/about-us

The 3.5 term programmes consist of English language during the first 0.5 term, although some academic content may be included.

Note: Modules are subject to availability and you will be guided onto the best combination of academic modules for your intended degree when you arrive at ONCAMPUS Southampton. For more information about module content, visit our website www.oncampus.global.

Your tuition fee includes annual membership of the University Student Union, for more information www.susu.org

Please note that the fees listed are subject to change

Entry Criteria

English level: 5.0 IELTS

or equivalent, with no single element less than 5.0 for 3-term UFP.

Students wishing to progress on to certain progression degrees will be required to show 5.5 IELTS or equivalent, with no single element less than 5.5, for entry to 3-term UFP.

An extended programme is available if you do not have the required English language level.

This programme lasts 4 terms and includes an English language module followed by 3 terms of UFP.

Academic requirements:

11-12 years

Successful completion of 11-12 years of schooling with good grades for 3-term UFP. Please visit www.oncampus.global for academic entry requirements.

Guideline minimum age :

17+

Students need to be age 17+ at the start of our ONCAMPUS programme and must be 18 by the start of the progression degree at University of Southampton.

*subject to meeting the specified entry criteria.

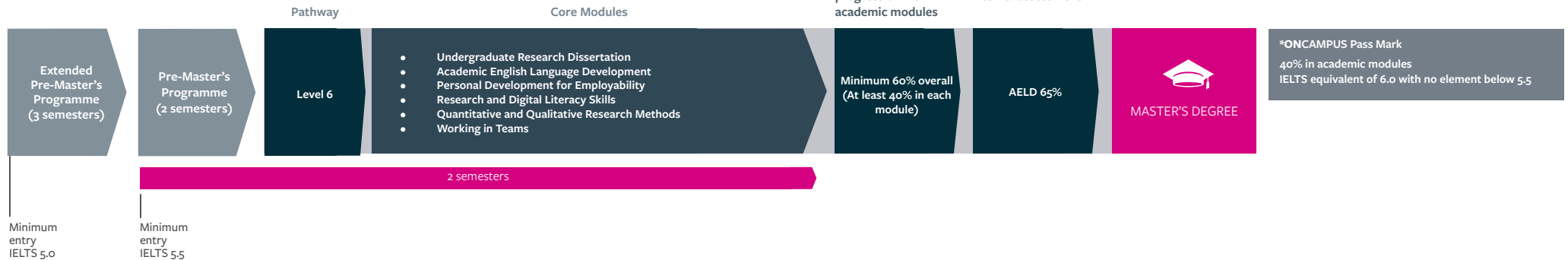
**option based on progression degree.

PRE-MASTER'S PROGRAMME (PMP)

The Pre-Master's Programme is a two or three semester programme with guaranteed progression* to a wide range of Master's degrees at the University of Southampton.



Degree progression route



Dates and fees

Start/End Dates	Number of semesters	Tuition fee	Progressing to Master's degree starting in
10 June 2024 - 08 June 2025	3	£34,450	September 2025
23 September 2024 - 08 June 2025	2	£28,785	September 2025
23 September 2024 - 08 August 2025	3	£34,705	September 2025
04 November 2024 - 08 August 2025	2.5	£31,745	September 2025
13 January 2025 - 08 August 2025	2	£28,785	September 2025

All programmes are subject to a £450 registration fee. Your tuition fee includes annual membership of the University of Southampton Student Union, for more information www.susu.org. 2.5 semester programmes consist of English language during the first 0.5 semester, although some academic content may be included. Please note that the fees listed are subject to change.

Entry Criteria

English level:

From **5.5 IELTS** or equivalent, with no single element less than 5.5 for 2 semester PMP. An extended programme is available if you do not have the required English language level. This programme lasts 3 semesters and includes an English language module followed by 2 semesters of PMP.

Academic requirements:

Successful completion of a Bachelor's degree or equivalent from a recognised university.

*subject to meeting the specified progression criteria.

For a full list of progression degrees go to www.oncampus.global/southampton

GUIDE TO SOUTHAMPTON



A friendly, safe and walkable city, Southampton is rich in culture with a fascinating history. Located on the South Coast, the city offers easy access to some of the UK's most spectacular scenery.

With great live music, modern art, a lively nightlife and rich variety of international cuisine and culture, Southampton has something for everyone.



Westquay shopping centre provides the perfect shopping experience with over **90 stores** varying from designer outlets to banks/services.



Restaurants, live music and shopping

If you are looking for restaurants, live music and a wide variety of leisure activities or just a place to meet your friends, Southampton is never short of options. Southampton is also a shopping destination for the South Coast with a range of big brands and smaller, independent stores.

Located on the South Coast, Southampton benefits from some of the best weather in the UK.



1.5 hours by train to London, 30 minutes to Bournemouth and 20 minutes to Winchester, enjoy day trips to visit different UK cities.

Music, theatre, culture and sports

As a vibrant, lively city, you can immerse yourself in galleries, theatres, museums and cinemas in your free time. You can cheer on national and international sports teams at major football and cricket venues. There's also plenty of options to take up a new sport, particularly for sailing and other water sports.



Over **43,000** students creating a young and vibrant city with plenty of activities and a lively nightlife.



Enjoy a range of sports, from football with Southampton FC, to international cricket at the Ageas Bowl.



Winchester

Just a short train ride from Southampton, the ancient city of Winchester is the ideal home for our students at the Winchester School of Art. The city offers extraordinary heritage, culture and history thanks to its range of restaurants, shops, creative events and historic landmarks, including the Winchester Cathedral and King Arthur's Round Table.

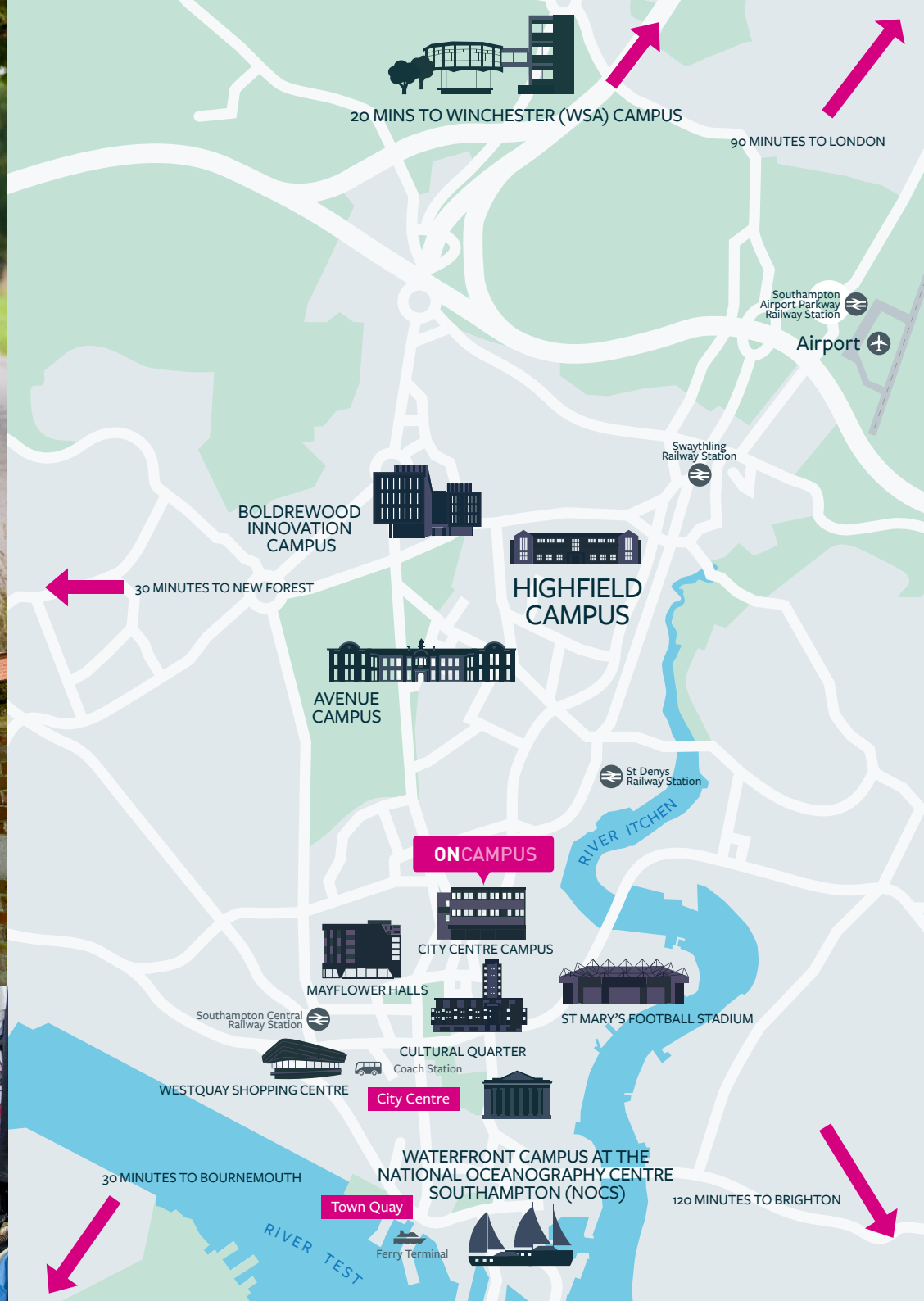


Over **68 parks** and green spaces, makes Southampton perfect for going on walks, running, picnics or exploring.



Southampton has over 700 restaurants, cafes and takeaway spots, ranging from fine dining restaurants to amazing local cuisine.





ACCOMMODATION IN SOUTHAMPTON

We will make sure you have a safe, comfortable environment to live in while you study with us. It is very important that you have a place to stay when you arrive in the UK, and while you can choose to organise your own accommodation, we strongly recommend that all students book a room through our free service.

Rooms are still available for **ONCAMPUS** Southampton, although many options are filling up fast. Access booking.oncampus.global to learn more about the options available.



CCTV



Wi-Fi
Access



Laundry
Room



Games Room



Bike
Storage



Communal
Spaces



On-site
gym



En-Suite
Rooms



+ Facilities Include:

Student lounge

Games room

Communal study spaces

Laundry facilities

On-site gym

Bike storage

En-suite bathrooms

