

University Highlights

The University of Sunderland has 20,000 students based on its campuses on the North East coast of the UK, in London and Hong Kong. With a long-established commitment to widening participation and world-leading research, the university has a track record for providing quality student experiences.



University of the Year for Social Inclusion

The Times and The Sunday Times Good University Guide 2021

State-of-the-art

£8.5 million

Sciences Complex allows its students access to outstanding facilities

Sunderland partners with some of the world's largest organisations such as

**Microsoft,
Yahoo
Nissan
Procter & Gamble**

A UK Top 50 University

Guardian University Guide 2024



156 nationalities represented in its student population

Population of Sunderland

270,000+



Over 15



places of worship

Studying in Sunderland offers great value for money.



Tuition fees from:	Accommodation fees from:	Total cost from:
University of Sunderland		
£ 15,420 x 1 year (ONCAMPUS)	£5,700 x 1 year	£80,020 <small>(including £1,400 annual international UG discount)</small>
£ 16,000 x 3 years (University)	£4,100 x 3 years	
University in London		
£ 21,480 x 1 year (ONCAMPUS)	£9,600 x 1 year	£137,130 <small>(fee based on a similarly ranked university)</small>
£ 26,350 x 3 years (University)	£9,000 x 3 years	

Based on a Business pathway. Accommodation costs for a 40-week study year. Prices correct as of December 2023 and based on September 2024 entry. All prices subject to change.

If you study **International Year One** you could save even more!

Faculty Highlights

With several subjects continuing to rise through the rankings every year, Sunderland focuses on providing expert teaching and hands-on learning opportunities.

Ranked
5th



in the UK for
**Film Production and
Photography**

Guardian University Guide 2024

6th



in the UK for
**Pharmacy and
Pharmacology**

Guardian University Guide 2024

Ranked
4th

in the UK for
Media and Film Studies

Guardian University Guide 2024



CIM|NCTJ|CIPD|IET
Accredited degree programmes

Ranked
12th

in the UK for
**Tourism, Hospitality and
Event Management**

Guardian University Guide 2024

Ranked
6th



in the UK for
**student satisfaction for
LLB Law students**

NSS 2021

Ranked
17th



in the UK for
Sports Science

Guardian University Guide 2024

Ranked
18th

in the UK for
Accounting and Finance

Guardian University Guide 2024

Ranked
4th



in the UK for
Journalism

Guardian University Guide 2024

Health and Life Sciences



100%

student satisfaction in
Biomedical Science

NSS 2021



100%

student satisfaction in
Forensic Psychology

NSS 2021



Top 30

in the UK
for **Health Sciences**

Complete University Guide 2024

Business, Social Sciences and Humanities



100%

student satisfaction in
**Business and Finance
Management**

NSS 2021



Law students
benefit from a
mock courtroom to
practise their skills



100%

student satisfaction in
Fashion Journalism

NSS 2021

Engineering and Physical Sciences



Top 25

in the UK for
**Computer Science and
Information Systems**

Guardian University
rankings by subject 2024



The David Goldman
Informatics Centre is a
'computing cathedral'
housing over 200
workstations



Accredited by
IET and BCS

Undergraduate degrees you can progress to

with guaranteed progression, subject to achieving the progression criteria, to a University of Sunderland degree.
Progression to Year 2 of these degrees available through the International Year One programme.

Business, Economics, Finance and Management pathway

English Required IELTS equivalent: **6.0** - no component lower than 5.5

Pass Mark for progression: **40%** in academic modules

BA (Hons) Accounting and Finance ¹ (iCAS option)	BA (Hons) Events Management ¹
BA (Hons) Business and Financial Management (iCAS option)	BSc (Hons) Esports Event Management ¹
BA (Hons) Business and Human Resource Management (iCAS option*)	BSc (Hons) International Tourism and Hospitality Management ¹ (iCAS option)
BA (Hons) Business and Management ¹ (iCAS option)	BSc (Hons) Tourism and Aviation Management
BA (Hons) Business and Marketing Management (iCAS option)	BSc (Hons) Tourism Management
	LLB (Hons) Law (iCAS option)

Humanities progression degrees

BA (Hons) Childhood Studies You will need a DBS check and medical to progress onto this degree	BA (Hons) Journalism
BA (Hons) English: Creative and Professional Writing	BA (Hons) Media, Culture and Communication
BA (Hons) Fashion Journalism	BA (Hons) Media Production
BA (Hons) Film and Media	BA (Hons) Social Media Management
BA (Hons) Film Production	BA (Hons) Sports Journalism
	BSc (Hons) Criminology

Engineering and Physical Sciences pathway

English Required IELTS equivalent: **6.0** - no component lower than 5.5

Pass Mark for progression: **40%** in academic modules

BEng (Hons) Electronic and Electrical Engineering (iCAS option)	BSc (Hons) Computer Science (iCAS option)
BEng (Hons) Engineering Technologies	BSc (Hons) Cybersecurity and Digital Forensics (iCAS option)
BEng (Hons) Mechanical Engineering (iCAS option)	BSc (Hons) Digital and Technology Solutions
	BSc (Hons) Game Development (iCAS option)

Students can also progress from the Business pathway

Life Sciences pathway

English Required IELTS equivalent: **6.0** with no component lower than 5.5

Pass Mark for progression: **40%** in academic modules

BSc (Hons) Biochemistry (iCAS option)	BSc (Hons) Physiological Sciences
BSc (Hons) Biomedical Science	BSc (Hons) Psychology (iCAS option)
BSc (Hons) Biopharmaceutical Science (iCAS option)	BSc (Hons) Psychology with Counselling (iCAS option)
BSc (Hons) Clinical Psychology (iCAS option)	BSc (Hons) Sports and Exercise Sciences
BSc (Hons) Cosmetic Science (iCAS option)	BSc (Hons) Sports Coaching
BSc (Hons) Forensic Psychology (iCAS option)	MPharm Pharmacy (4-year degree)
BSc (Hons) Medicinal Chemistry (iCAS option)	7.0 IELTS (no component less than 6.5), 65% in all academic modules (Biology, Chemistry and Skills for Science), plus an interview.
BA (Hons) Physical Education and Youth Sport	

Master's degrees you can progress to

with guaranteed progression, subject to achieving the progression criteria, to a University of Sunderland degree.

English Required IELTS equivalent: **6.0** - no component lower than 5.5

Pass Mark for progression: **40%** in academic modules

Extended Award MA/MSc (please see page 17)	MSc Computing Suitable for students who have not studied computing before
LLM Commercial Law and International Trade*	MSc Cosmetic Science*
LLM Criminal Law and Procedure	MSc Data Science
LLM International Human Rights*	MSc Drug Discovery and Development
LLM Law*	MSc Finance and Management ¹
MA Childhood and Youth Studies*	MSc Human Resource Management
MA Design*	MSc Inequality and Society*
MA Education You will need higher grades or interview for progression	MSc International Business Management
MA English Studies You will need higher grades or interview for progression	MSc Leadership in Criminal Justice and Policing*
MA Journalism / MA Journalism (Sport)*	MSc Pharmaceutical and Biopharmaceutical Formulations*
MA Marketing ¹	MSc Project Management
MA Public Relations*	MSc Psychology (Conversion) Suitable for students who haven't studied Psychology before
MA Radio, Audio and Podcasting*	MSc Public Health
MA Teaching English to Speakers of Other Languages (TESOL) You will need higher grades or interview for progression	MSc Sports and Exercise Sciences
MA Visual Practice*	MSc Tourism and Aviation
MBA (Generic) Master of Business Administration	MSc Tourism and Events
MSc Applied Cybersecurity	MSc Tourism and Hospitality
MSc Applied Data Science*	
MSc Applied Project Management*	

¹ These degrees are also available at the University of Sunderland's London campus.

*additional progression requirements for these degrees. Please visit www.oncampus.global for more details.

Please note that not all programmes are available for a January start. Please visit www.oncampus.global for more details.

How ONCAMPUS Works

Our programmes at **ONCAMPUS** Sunderland are designed for international students who do not meet the requirements for direct entry to study at the University of Sunderland. You will benefit from the support we offer in preparing you to progress to the University.



Increase your English language level

- Academic writing skills
- Academic reading skills
- Presentation and discussion skills
- Listening and note taking

Improve academic grades and study skills

- Additional year of study equivalent to 13 years of UK study for undergraduate degree
- Demonstrate academic level to meet university requirements
- Present higher grades in pathway programme than achieved at high school for undergraduate entry
- Learn the study skills essential for success in UK universities
- Additional research study skills for Master's students

Expert university progression support

- Expert guidance on which degree to progress to
- One-to-one support sessions
- Faculty visits and meetings

Progress to university degree

ONCAMPUS gives you...

Outstanding teaching and support

Through every step of your journey with us, you will be supported by highly qualified teachers and support staff, both inside and outside the classroom.

Your personal tutor will meet with you regularly to ensure that you are on track to pass the programme and progress to your chosen degree.

Your personal tutor is also there to help you with any issues you might have inside or outside the classroom.

A proven track record of success

ONCAMPUS is part of Cambridge Education Group, one of the UK's leading university pathway providers since 1952.

Cambridge Education Group was the first private institution to offer university foundation programmes in the UK in 1985, and successfully prepares thousands of students for the UK's top universities every year.

Part of the University from day one

The **ONCAMPUS** Sunderland centre is located at the heart of the University, close to all the University's facilities.

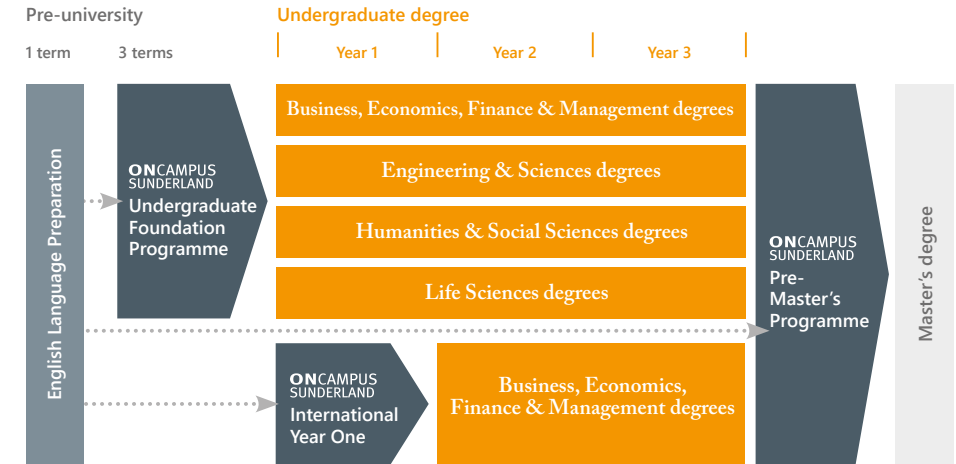
You will receive a University student card, and with it you will have access to all the University's facilities, clubs and societies while you study your **ONCAMPUS** programme.

You will meet your course leader at the University before you start your degree, and have the opportunity to try out some of the excellent facilities.

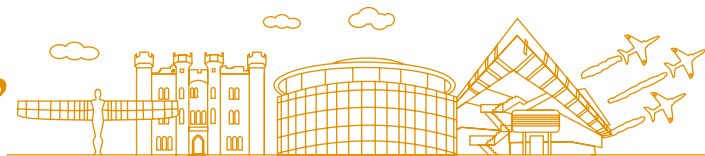
Your route to a degree at University of Sunderland

ONCAMPUS Sunderland offers guaranteed progression* to a wide range of undergraduate and postgraduate degrees at the University of Sunderland, on successful completion of our Foundation, International Year One or Pre-Master's programmes.

*subject to meeting the specified criteria.



Guide to Sunderland, England



Sunderland offers the perfect combination of city and seaside living and is a friendly, diverse and affordable place to live and study. With miles of beautiful coastline, beautiful parks, an international-class airshow, and the award-winning National Glass Centre, the city has much to showcase.

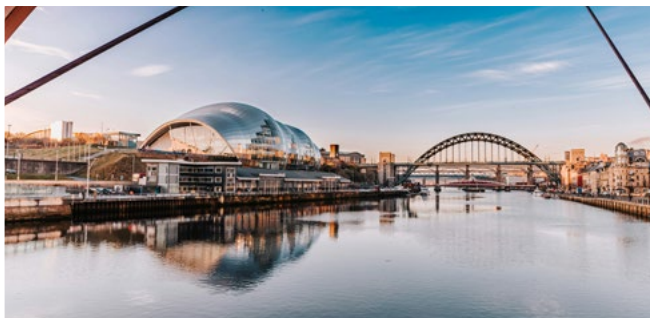


Enjoy miles of beautiful coastline

at hidden gems such as Seaburn and Roker, offering blue flag beaches, kayaking, canoeing, abseiling and surfing for the adventurous.

Just over 30 minutes to Newcastle

or the "Toon" as it's locally known. Visit the popular Quayside, marvel at the iconic Angel of the North and embrace the friendly Geordie welcome.



A variety of popular cultural attractions

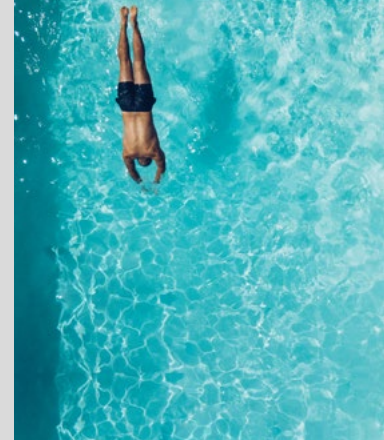
such as The National Glass Centre, the International Air Show and Sunderland Museum and Winter Gardens.



Olympic-sized swimming pool

located within Sunderland's Aquatic Centre

an indoor sports complex also containing a diving pool and a gymnasium. It is the only full Olympic-standard pool in North East England between Glasgow and Leeds.



Over
50 
restaurants within
city centre

including Indian, Thai,
Italian and many more...



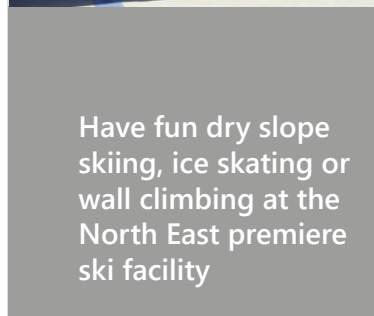
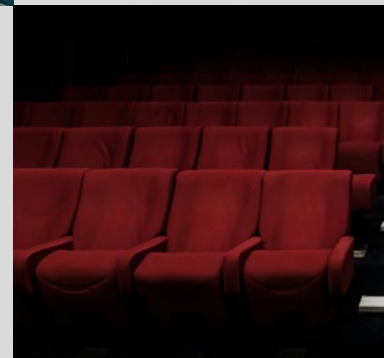
Population of over
270,000+



2 

cinemas within
the city centre

plus a full size one on campus



Have fun dry slope
skiing, ice skating or
wall climbing at the
North East premiere
ski facility



Under
1 mile to
Stadium of Light

15 minute walk from the Sir Tom Cowie Campus or a 7 minute cycle to the huge sporting stadium



DIGITAL MAP



ONCAMPUS Sunderland CITY GUIDE PAGE



oncampus.global/sunderland-city-guide



▲ To Newcastle, Mosques and Hindu Temple: 15 Miles

M Millfield

M University

The Royalty Theatre

University Of Sunderland City Campus

Sunderland Empire Theatre

The Bridges Shopping Centre

M Sunderland

M Park Lane



The Stadium Of Light

M St Peters

River Wear



Wearmouth Bridge

Stadium Of Light



▲ To Roker Beach
1 mile from ONCAMPUS classrooms

ONCAMPUS



University Of Sunderland Sir Tom Cowie Campus



National Glass Centre

City Library And Arts Centre



Sunderland Museum And Winter Gardens

Church Of Holy Trinity

Accommodation in Sunderland

ONCAMPUS aims to make sure that finding a place to live while you study with us is quick and easy. It is very important that you have a place to stay when you arrive in the UK, and while you can choose to organise your own accommodation, we strongly recommend that all students book a room through our free service.

We have fantastic residences available for you to book in Sunderland, offering good value for money. The details below indicate the types of facilities available and the price range you can expect from our accommodation options.



7-11 minute
WALK TO
ONCAMPUS



Wi-Fi
Access



Study
Area



En-Suite
Bathroom



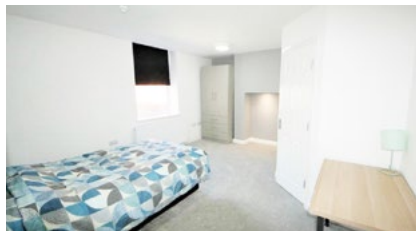
Laundry
Facilities



Communal
Lounge



CCTV



+ Facilities Include:

- Student lounge
- Games room
- Communal study spaces
- Laundry facilities
- Reception area staffed 24 hours a day
- Bike storage
- Welfare support 24 hours a day
- All utility bills included

