



University of  
Reading



OnCampus

2025-26

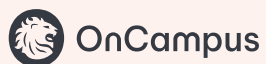
OnCampus is proud to work in partnership with the University of Reading to offer high-quality university preparation programmes for international students on the University campus.



The University of Reading is an outstanding educational institution, with an internationally renowned reputation for the quality of its research and the excellence of its teaching.





<p><b>25th highest placed UK University</b></p> <p>and ranked 172nd in the world in the QS World University Rankings, 2024</p>	<p><b>Within easy reach of central London</b></p> 	<p><b>Winner of 14 consecutive Green Flag awards</b></p> <p>for its 130 hectares of stunning parkland</p>	<p><b>Triple-accredited business school</b></p>
--	---	---	---

## How OnCampus Works



Want to study at the University of Reading but need a little extra prep? OnCampus Reading's pathway programmes are here to help! We're designed for international students who might not meet direct entry requirements.

### Why choose OnCampus Reading?

 <p><b>We're here to support you</b></p> <p>Our friendly team supports you every step of the way, making sure you feel confident for university.</p>	 <p><b>University connections</b></p> <p>We work closely with the university of your choosing offering guidance on selecting your degree, one-on-one support, and even meetings with professors.</p>	 <p><b>Master the basics</b></p> <p>Sharpen your English (reading, writing, speaking, listening) and learn strong study skills for university success. For Master's students, we offer extra research skill development.</p>	 <p><b>Stay at your dream university</b></p> <p>Our programmes prepare you for undergraduate or postgraduate studies at the dream university you are currently studying.</p>
---	---	---	---

# Contents



## About University of Reading

University Highlights	4
Subject Highlights	6
Henley Business School	8
Progression degrees	10

## OnCampus Programmes

Your route to a degree	19
Undergraduate Foundation Programme (UFP)	20
Pre-Master's Programme (PMP)	22

## About Student Life

Guide to Reading	24
------------------	----

## Accommodation

Accommodation in Reading	30
--------------------------	----



# University Highlights

## World Top 200

172nd

QS World University Rankings 2025



## Top 10

in the UK for Education

ranked 9th in the Guardian University Guide 2024

Five-time winner of the Queen's Anniversary Prize



## 35th in the UK

Complete University Guide Rankings 2025



## Winner

Outstanding Contribution to Environmental Leadership

THE Awards 2023

## 1st

in the UK for sustainability, environmental and ethical performance

People and Planet University League 2023/24

## 27th

in the UK for Business & Management Studies

Complete University Guide 2025



## Educating Future Generations

The world-famous climate stripes, designed by Professor Ed Hawkins MBE from the University of Reading, present a compelling visualisation of how global temperatures have risen since the mid-19th century due to human-caused climate change. The stripes have been shared by thousands globally, including the likes of the United Nations and Greta Thunberg, who has also used them on the front cover of her latest book.



# Subject Highlights

The University offers a wide range of programmes, from the pure and applied sciences to languages, humanities, social sciences, business and arts.

94% of graduates are in work or further study within 15 months of graduation<sup>1</sup>

<sup>1</sup> Graduate Outcomes Survey 2020/21, based on first degree/other undergraduate, postgraduate (taught), and postgraduate (research) responders.

# Studying Art & Design



10th

for Art and Design

Complete University Guide 2025

Ranked 7th for  
Graphic Design  
in the UK

Guardian University Ranking 2025



# Studying Humanities

International Relations  
is ranked 20th  
in the UK

Guardian University Ranking 2025





# Studying Science and Engineering

Ranked 5th for Earth and Marine Sciences in the UK

Guardian University Ranking 2025

6th in the UK for Food Science

Guardian University Ranking 2025



Geography is ranked 11th in the UK

Guardian University Rankings 2025

Construction, Surveying and Planning is ranked 12th in the UK

Guardian University Rankings 2025

Top 10 for Animal Science and Agriculture

10th, Guardian University Rankings 2025





# Henley Business School

Founded in 1945, Henley is one of the oldest business schools in the UK and is part of the University of Reading. It is widely recognised for its diversity and international reach, with 150 academics from 18 countries, and over 7,000 students from more than 140 countries.



Industry connections include BMW, British Airways, BT, Capita, Citi, Cushman Wakefield, Deloitte, Disney, EY, HSBC, KPMG, Microsoft, Oracle, Porsche, SAP and Savills.

## 20th

in the UK for overall subject in 'Business, Management and Marketing'

The Times & Sunday Times Good University Guide 2024

Triple Accredited



## 21st

for Business & Management

## 26th

for Accounting & Finance in the UK

University of Reading (including Henley Business School), the Guardian University Rankings 2025



# Undergraduate degrees you can progress to



Progression degrees are subject to change. View the full list of degrees you can progress to here

Students who successfully complete their OnCampus programme, and meet the entry requirements, will have the opportunity to progress onto one of the following undergraduate degrees at the University of Reading:

## Art & Design pathway

English Required OCTOE – internal assessment: 65%  
Pass Mark for progression in academic modules: Dependent on degree, please see [oncampus.global](http://oncampus.global)

BA Art and Film	BA Film and Theatre
BA Art and History of Art	BA Fine Art (3 year programme)
BA Art and Philosophy (70% OCTOE for progression)	BA Graphic Communication (70% OCTOE for progression)
BA Art and Psychology	BA Theatre and Performance
BA Film and Television	



Placement year and year abroad options available on many degree options.

## Business, Economics, Finance & Management pathway

English Required OCTOE – internal assessment: 65%  
Pass Mark for progression in academic modules: Dependent on degree, please see [oncampus.global](http://oncampus.global)

BA Accounting and Business Flying Start degree	BSc Business and Management (Accounting)
BA Accounting and Management	BSc Business and Management (Entrepreneurship and Innovation)
BA Economics	BSc Business and Management (Data Analytics and Digital Business)
BA International Relations and Economics	BSc Business and Management (Human Resources and Organisational Behaviour)
BA Politics and Economics	BSc Business and Management (Marketing)
BSc Accounting and Finance	BSc Business Economics
BSc Agricultural Business Management	BSc Consumer Behaviour & Marketing
BSc Business and Management	BSc Economics
BSc Environmental Management and Sustainability	BSc Economics and Finance
BSc Finance	BSc International Business and Management
BSc Finance (FinTech)	BSc International Business and Management with a Modern Language*
BSc Finance (International Business)	BSc International Development
BSc Finance (Investments)	BSc Real Estate
BSc Finance (Sustainable Finance)	BSc Real Estate Finance
BSc Food Business and Marketing	BSc Real Estate Development and Planning

Degrees available at the time of print, please check the university website for most up to date progression degree list before applying.

\*Higher english requirements needed for progression, please see website for further details

OnCampus Reading Undergraduate Foundation Programme pathways in engineering, humanities and life sciences are delivered from OnCampus London.



Progression degrees are subject to change. View the full list of degrees you can progress to here

#### All pathways

**English Required OCTOE – internal assessment: 65%**  
**Pass Mark for progression in academic modules: Dependent on degree, please see [oncampus.global](https://oncampus.global)**

BA Education Studies	BSc Geography (Human)
BA English Language and Linguistics	BSc Geography (Human and Physical)
BSc Architecture	BSc Geography (Physical)
BSc Geography and Economics (Regional Science)	BA Primary Education with Maths

#### Humanities & Social Sciences pathway

**English Required OCTOE – internal assessment: 65% / 70%**  
**Pass Mark for progression in academic modules: Dependent on degree, please see [oncampus.global](https://oncampus.global)**

BA Ancient History	BA Modern Languages and International Relations
BA Ancient History and Archaeology	BA Museum and Classical Studies
BA Archaeology	BA Museum Studies and Archaeology
BA Archaeology and Anthropology	BA Philosophy
BA Classical Studies	BA Philosophy and Classical Studies
BA Classics	BA Philosophy and International Relations
BSc Criminology	BA Philosophy and Politics
BA Ethics, Value and Philosophy	BA Philosophy, Business and Ethics
BA French and International Development	BA Philosophy, Politics and Economics
BA Modern Languages (3 year)	BA Politics and International Relations
BA Modern Languages (4 year)	BA Primary Education (QTS)
BA Modern Languages and Business	BA Spanish and International Development
BA Modern Languages and English Language	BA War, Peace and International Relations
BA Modern Languages and History	LLB Law

#### Life Sciences pathway

**English Required OCTOE – internal assessment: from 65%**  
**Pass Mark for progression in academic modules: Dependent on degree, please see [oncampus.global](https://oncampus.global)**

BSc Biochemistry	BSc Psychology
BSc Biological Sciences	BSc Psychology and Language Sciences
BSc Biomedical Sciences	BSc Psychology and Philosophy
BSc Bioveterinary Sciences	BSc Psychology with Neuroscience
BSc Chemistry	BSc Zoology
BSc Chemistry with Cosmetic Science	MChem Chemistry
BSc Ecology and Wildlife Conservation	MPAS Physician Associate Studies <sup>1</sup>
BSc Medical Science	MPharm Pharmacy <sup>1</sup>
BSc Microbiology	MSci Applied Psychology <sup>1</sup>
BSc Pharmaceutical Chemistry	MSci Speech and Language Therapy <sup>1</sup>
BSc Pharmacology	

<sup>1</sup>These degrees require a UCAS application and an interview to progress.

#### Engineering & Physical Sciences pathway

**English Required OCTOE – internal assessment: 65%**  
**Pass Mark for progression in academic modules: Dependent on degree, please see [oncampus.global](https://oncampus.global)**

BSc Agriculture	BSc Food Science
BEng Architectural Engineering	BSc Food Technology with Bioprocessing
BEng Biomedical Engineering	BSc Nutrition
BSc Building Surveying	BSc Nutrition & Food Science
BSc Computer Science	BSc Quantity Surveying
BSc Construction Management	MEng Architectural Engineering
BSc Construction Management and Surveying	BSc Environmental Science





# Master's degrees you can progress to



Progression degrees are subject to change. View the full list of degrees you can progress to here

Students who successfully complete their OnCampus programme, and meet the required entry criteria, will have the opportunity to progress onto one of the following postgraduate degrees at the University of Reading:

## Business degrees

English Required AELD – internal assessment: 65%  
Pass Mark for progression in academic modules: Dependent on degree, please see [oncampus.global](https://oncampus.global)

MSc Accounting, Financial Management and Digital Business	MSc International Accounting and Finance
MSc Climate Change, Sustainable Business and Green Finance	MSc International Business
MSc Digital Business and Data Analytics	MSc International Business and Finance
MSc Digital Innovation	MSc International Human Resource Management
MSc Digital Marketing	MSc Investment Management
MSc Entrepreneurship and Innovation	MSc Management
MSc Finance	MSc Marketing (International Marketing)
MSc Finance and FinTech Programme	MSc Marketing (Sustainable Marketing)

## Economics degrees

English Required AELD – internal assessment: 65%  
Pass Mark for progression in academic modules: Dependent on degree, please see [oncampus.global](https://oncampus.global)

MSc Agricultural Economics	MSc Development Finance
MSc Applied Economics	MSc Food Economics and Marketing
MSc Business Economics	MSc Public Policy

## Art and Design degrees

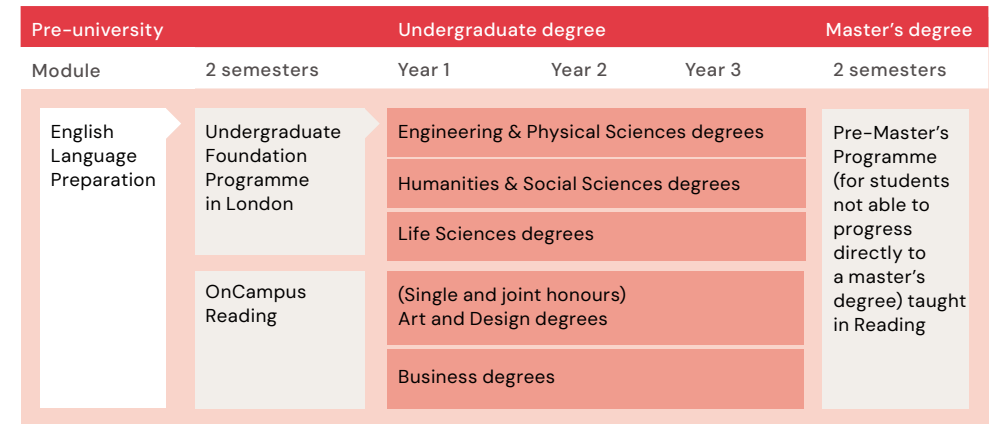
English Required AELD – internal assessment: 65%  
Pass Mark for progression in academic modules: Dependent on degree, please see [oncampus.global](https://oncampus.global)

MA Fine Art	MA Film and Creative Enterprise
-------------	---------------------------------



# Your route to a degree at the University of Reading

OnCampus Reading offers students a guaranteed opportunity for progression onto undergraduate and master's degree programmes at the University of Reading.



## OnCampus gives you...



### Outstanding teaching and support

Through every step of your journey with us, you will be supported by highly qualified teachers and support staff, both inside and outside the classroom.

Your personal tutor will meet with you regularly to ensure you are on track to pass the programme and progress to your chosen degree.

Your personal tutor is also there to help you with any issues you might have inside or outside the classroom.

### A proven track record of success

OnCampus is part of Cambridge Education Group, one of the UK's leading university pathway providers since 1952.

Cambridge Education Group was the first

private institution to offer university foundation programmes in the UK in 1985, and successfully prepares thousands of students for the UK's top universities every year.

### Part of the University from day one

The OnCampus centre is located at the heart of the University.

You will receive a University student card, and with it you will

have access to some University's facilities, clubs and societies while you study your OnCampus programme.

You will meet your course leader at the University before you start your degree, and have the opportunity to try out some of the excellent facilities.

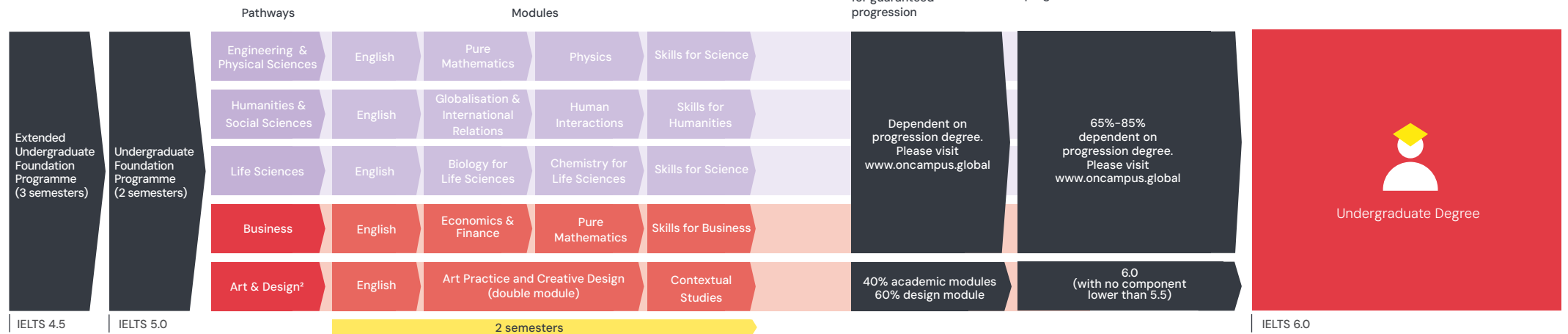


# Undergraduate Foundation Programme (UFP)

This programme provides a guaranteed<sup>1</sup> opportunity for progression to Year 1 of a wide range of undergraduate degrees at the University of Reading.

OnCampus Reading Undergraduate Foundation Programme pathways in Humanities & Social Sciences, Life Sciences, and Engineering & Physical Sciences are delivered from OnCampus London.

## Degree progression route



## Entry Criteria

### English level:

From 5.0 IELTS or equivalent, with no component less than 4.5, for 2-semester UFP.

An Extended programme is available if you do not have the required English language level. This programme includes an English language module followed by 2 semesters of UFP.

<sup>1</sup> Subject to achieving the pass mark for progression, detailed above.

<sup>2</sup> September 2025 intake only.

### Academic Requirements:

11–12 years Successful completion of 11–12 years of schooling with good grades. Please see [www.oncampus.global](http://www.oncampus.global) for country-specific academic entry requirements.

### Guideline Minimum Age:

17+ Under-18 students are subject to the under-18 supplement.

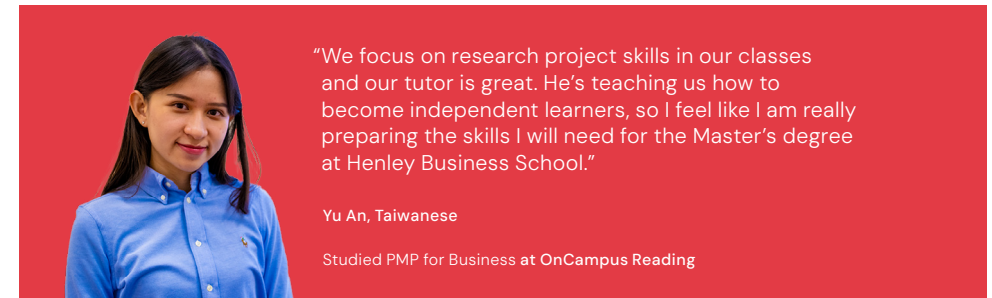
For progression degrees, see page 10

Dates	Duration	Progressing to undergraduate degree starting in
13 January 2025 – 08 August 2025	3 terms	September 2025
22 September 2025 – 07 June 2026	2 semesters	September 2026
22 September 2025 – 07 August 2026	3 semesters	September 2026
12 January 2026 – 07 August 2026	2 semesters	September 2026

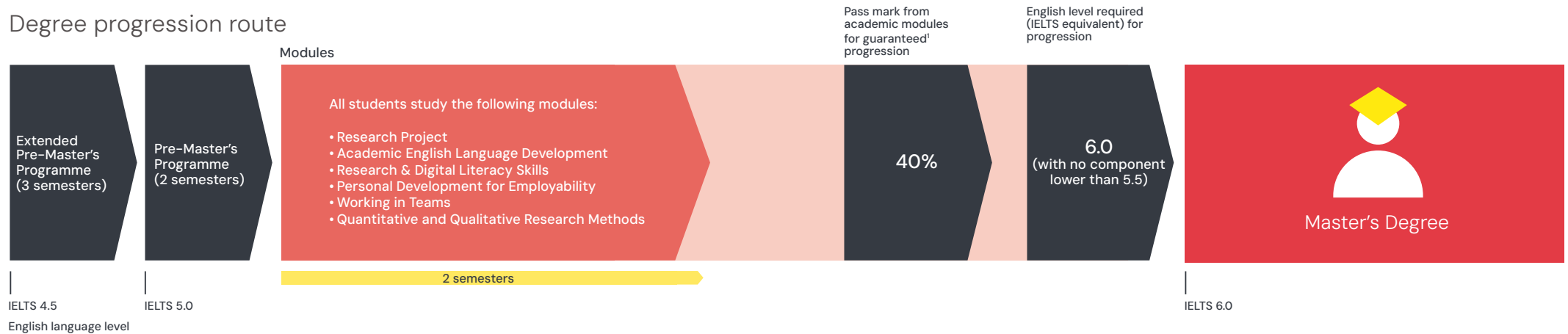
Please visit [www.oncampus.global](http://www.oncampus.global) for full details on fees and module content. Please note the Art & Design pathway is only available on the 2-semester September 2025 intake.

# Pre-Master's Programme (PMP)

The Pre-Master's Programme is taught at level 5 and offers a guaranteed<sup>1</sup> opportunity for progression to a wide range of Master's degrees at the University of Reading and Henley Business School.



## Degree progression route



## Entry Criteria

**English level:**  
From 5.0 IELTS or equivalent, with no single element less than 4.5, for 2-semester PMP.

An Extended programme is available if you do not have the required English language level. This programme includes an English language module (ELPP) followed by 2 semesters of PMP.

**Academic Requirements:**  
Degree  
Successful completion of Bachelor's degree or equivalent from a recognised university.

**Guideline Minimum Age:**  
20+

<sup>1</sup> subject to meeting progression criteria

Some degrees require additional interview, audition/ portfolio and/or a higher pass mark, as indicated on the degree list on page 17.

Dates	Duration	Progressing to Master's degree starting in
13 January 2025 – 08 August 2025	2 semesters	September 2025
22 September 2025 – 07 June 2026	2 semesters	September 2026
22 September 2025 – 07 August 2026	3 semesters	September 2026
12 January 2026 – 07 August 2026	2 semesters	September 2026

Please visit [www.oncampus.global](http://www.oncampus.global) for full details on fees and module content.



# Guide to Reading



**Reading's vibrant town centre boasts a huge variety of restaurants, parks and entertainment, with stunning English countryside close by.**

The town is close to some impressive green spaces which you can explore. You will also be close to the beautiful English countryside. The Chilterns and the North Wessex Downs are perfect for walking, cycling and socialising.



**25 minutes to London by train**

## **Train Station**

Reading's new £850m mainline train station is just two miles away from campus and provides direct rail and Overground (Elizabeth Line) links to London and many of the UK's other major cities.



## **Reading Festival**

is one of the best known in the UK, with more than 100,000 fans flocking to see some of the biggest names in music. The university partners with the festival to give students the chance to work backstage.



## **Wide variety of cultural attractions**

including The Hexagon theatre, South Street Arts Centre and the University's Museum of English Rural Life.

**2 large shopping centres, regular local markets and over 100 restaurants within the town centre including Indian, Thai, Italian and many more.**





Direct flights  
to Europe



from Heathrow Airport.

A fabulous multiplex cinema shows  
all the latest movies in Reading  
town centre.

## SportsPark

Conveniently located on the university's campus, you can take part in a variety of activities including tennis, badminton, volleyball, basketball, cricket, squash, dance, yoga, football and hockey.

**Under 3 miles to Select Car  
Leasing Stadium, home to Reading  
football team.**

Just 20 minutes by bus or 16 minutes to  
cycle to this huge sporting stadium.



## Cole Museum of Zoology

Only a three-minute walk from the  
students' union.





# Your Local Area



- 1 Reading Train Station
- 2 Vue Multiplex Cinema
- 3 South Street Arts Centre
- 4 Museum Of English Rural Life
- 5 Unite Student Accommodation
- 6 Broad Street Mall
- 7 The Blade
- 8 The Oracle Shopping Centre
- 9 Reading Museum & Town Hall







## Accommodation in Reading

We will make sure you have a safe, comfortable environment to live in while you study with us. It is very important that you have a place to stay when you arrive in the UK and we have a number of fantastic residences available for you to book in Reading, all offering good value for money. The details below indicate the types of facilities available and the price range you can expect from our accommodation options.



To find out more and to book your accommodation visit: [booking.uncampus.global](https://booking.uncampus.global)



### Facilities include:

- Study spaces
- Vending machine
- Rooftop terraces
- TVs / Table football
- CCTV & secure access
- All utility bills included
- Wi-Fi
- On-site management
- Secure cycle storage



Short distance to OnCampus



Wi-Fi Access



Laundry Room



Games Room



Bike Storage



Communal Spaces



24/7 assistance and on-site service team



En-Suite Rooms