

# University Highlights



The University of Reading is home to more than 27,000 students from around 160 countries. It is proud to be a research-intensive university, working with governments, international agencies, businesses, and charities striving to tackle some of the biggest problems facing the world today, such as climate change, heart disease, and international conflict.

**98%**  
of research is of international standing

Based on the submissions judged to be world leading, internationally excellent and internationally recognised in overall quality in the latest Research Excellence Framework (REF) 2021

**26th**   
highest placed UK University ranked in the QS World University Rankings 2024

**Top 10**  
in the UK for Education  
Guardian University Guide, 2024

Five-time winner of the **Queen's Anniversary Prize** for Higher Education

**25th**  
in the UK for Business & Management Studies  
Complete University Guide, 2024

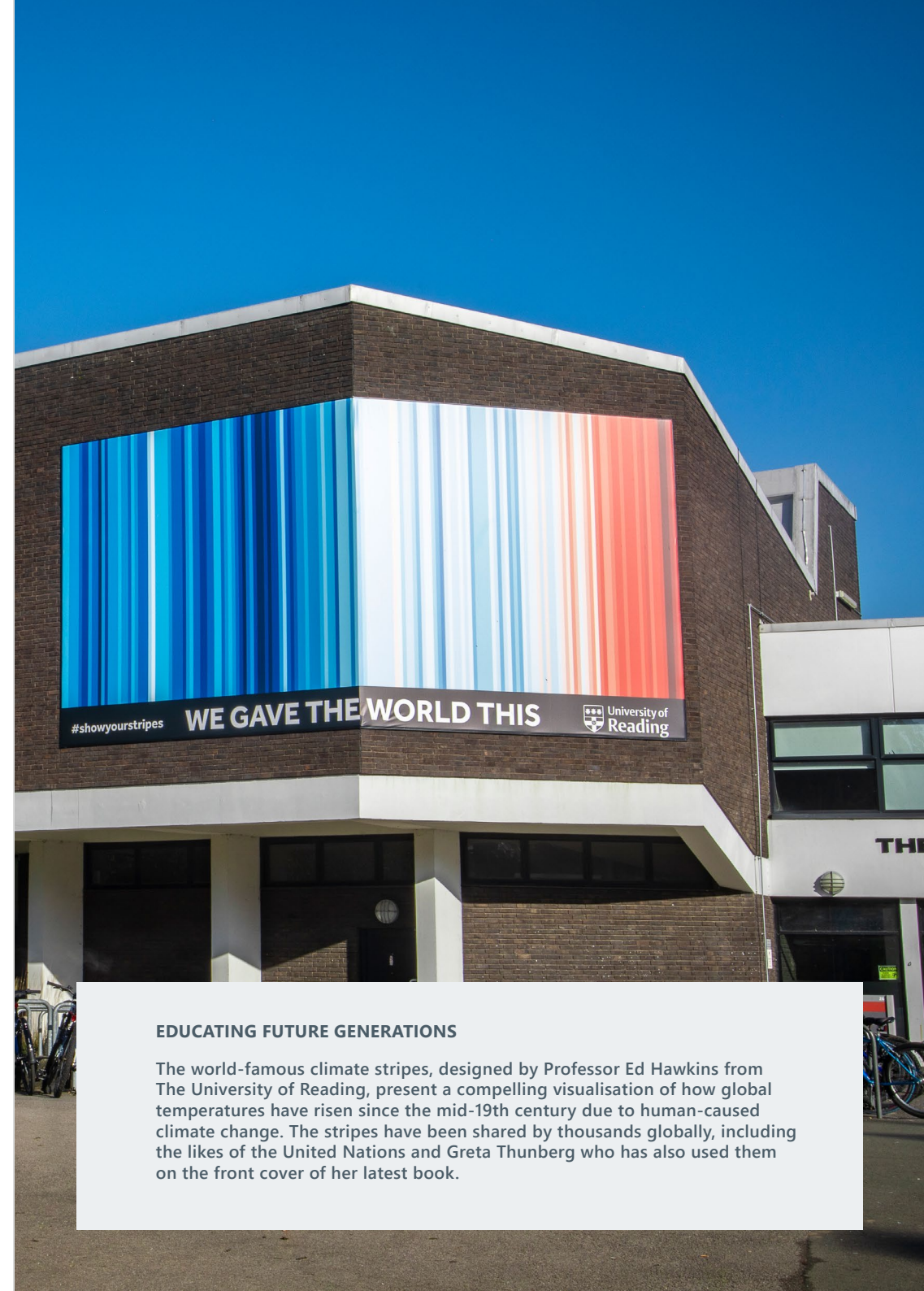
**1st**  
Greenest university in the UK  
People and Planet University League 2023/24

The main campus **Whiteknights** is set in 130 hectares of beautiful parkland with easy access to London

Winner of the Green Flag Award for the 13th year in a row, 2023

World Top 200  
**169th**  
QS World University Rankings, 2024

TOP **10**  
of Universities ranked worldwide for **Impact on Climate Action**  
THE Impact Rankings 2023



## EDUCATING FUTURE GENERATIONS

The world-famous climate stripes, designed by Professor Ed Hawkins from The University of Reading, present a compelling visualisation of how global temperatures have risen since the mid-19th century due to human-caused climate change. The stripes have been shared by thousands globally, including the likes of the United Nations and Greta Thunberg who has also used them on the front cover of her latest book.

# Schools and Departments Highlights



The University offers a wide range of programmes, from the pure and applied sciences to languages, humanities, social sciences, business and arts.

**12th** 

for Art and Design

Complete University Guide, 2024

**11th**

for Food Science

Complete University Guide, 2024

**1st** 

for Agriculture and Forestry

1st placed UK University for Agriculture and Forestry out of all institutions included in the QS World University Rankings by Subject, 2023

**10th**

in the UK for Business and Economics

10th highest placed UK University for Business and Economics out of all institutions included in the Times Higher Education World University Rankings 2024



**LLB Law**

is accredited by the Solicitors Regulation Authority and Bar Standards Board

Ranked

**3rd**

in the UK for Building

Complete University Guide 2024

TOP

**15**

in the UK for Marketing

Complete University Guide, 2024

**The School of Psychology and Clinical Language Sciences**

houses a world-renowned institute for evidence-based psychological treatments for children and young adults, and in-house NHS clinics offering psychological interventions and speech and language therapy

**6th**

in the UK for Graphic Design

Guardian University Guide, 2024

**3rd**

in the UK for research power in Earth Systems and Environmental Sciences

REF 2021

**100%**

of graduates are in work or further study within 15 months of the end of their course

Graduate Outcomes Survey 2020/21; includes undergraduate, postgraduate taught and postgraduate research responders from Film, Theatre and Television

**8th**

in the UK for research impact in Typography and Graphic Communication

REF 2021



# Henley Business School



Founded in 1945, Henley is one of the oldest business schools in the UK and is part of the University of Reading. It is widely recognised for its diversity and international reach with 150 academics from 18 countries and over 7,000 students from more than 140 countries.

About Henley Business School



UK  
**1st**

for Land and Property Management

University of Reading (including Henley Business School) ranking, Complete University Guide 2024

**8th**

for career after 15 months in Business and Management

University of Reading (including Henley Business School) ranking, Guardian UK University Guide 2024

## Industry connections

include BMW, British Airways, BT, Capita, Citi, Cushman Wakefield, Deloitte, Disney, EY, HSBC, KPMG, Microsoft, Oracle, Porsche, SAP and Savills



**Top 30**

in the UK for overall undergraduate subject of Accounting & Finance

University of Reading (including Henley Business School) ranking, Complete University Guide, 2024

Top  
**10**

for Master's in Finance

Out of all UK business schools included in the Financial Times Global Masters in Finance experience, 2023

**Triple Accredited**



# Undergraduate degrees you could progress to

Students who successfully complete their **ONCAMPUS** programme, and meet the required entry criteria will have the opportunity to progress onto one of the following undergraduate degrees at the University of Reading:

**ONCAMPUS** Reading Undergraduate Foundation Programme pathways in Engineering, Humanities and Life Sciences are delivered from **ONCAMPUS** London.

## Art and Design pathway

**English Required** OCTOE - internal assessment: 65%

**Pass Mark** for progression academic modules: Dependent on degree, please see [oncampus.global](https://oncampus.global)

BA Art and Film	BA Film and Theatre
BA Art and History of Art	BA Fine Art (3 year programme)
BA Art and Philosophy	BA Graphic Communication
BA Art and Psychology	BA Theatre and Performance
BA Art and Theatre	
BA Film and Television	

## Business, Economics, Finance and Management pathway

**English Required** OCTOE - internal assessment: 65%

**Pass Mark** for progression academic modules: Dependent on degree, please see [oncampus.global](https://oncampus.global)

BA Accounting and Business Flying Start degree	BSc Business and Management (Data Analytics and Digital Business) with Placement Year
BA Accounting and Management	BSc Business and Management (Data Analytics and Digital Business) with Year Abroad
BA Accounting and Management with Placement Experience	BSc Business and Management (Entrepreneurship and Innovation)
BA Economics	BSc Business and Management (Entrepreneurship and Innovation) with Placement Year
BA Economics with Placement Year	BSc Business and Management (Entrepreneurship and Innovation) with Year Abroad
BA International Relations and Economics	BSc Business and Management (Human Resources and Organisational Behaviour)
BA International Relations and Economics with Placement Year	BSc Business and Management (Human Resources and Organisational Behaviour) with Placement Year
BA Politics and Economics	BSc Business and Management (Human Resources and Organisational Behaviour) with Year Abroad
BA Politics and Economics with Placement Year	BSc Business and Management (Marketing)
BSc Accounting and Finance	BSc Business and Management (Marketing) with Placement Year
BSc Accounting and Finance with Placement Experience	BSc Business and Management (Marketing) with Year Abroad
BSc Accounting and Finance with Year Abroad	BSc Business and Management with Placement Year
BSc Agricultural Business Management	BSc Business and Management with Year Abroad
BSc Agricultural Business Management with Placement Year	BSc Business Economics
BSc Business and Management	BSc Business Economics with Placement Year
BSc Business and Management (Accounting)	BSc Consumer Behaviour & Marketing
BSc Business and Management (Accounting) with Placement Year	
BSc Business and Management (Accounting) with Year Abroad	
BSc Business and Management (Data Analytics and Digital Business)	

BSc Consumer Behaviour & Marketing with Placement Year

BSc Economics

BSc Economics and Finance

BSc Economics with Placement Year

BSc Environmental Management and Sustainability

BSc Environmental Management and Sustainability with Placement Year

BSc Finance

BSc Finance (FinTech)

BSc Finance (FinTech) with Placement Year

BSc Finance (FinTech) with Year Abroad

BSc Finance (International Business)

BSc Finance (International Business) with Placement Year

BSc Finance (International Business) with Year Abroad

BSc Finance (Investments)

BSc Finance (Investments) with Placement Year

BSc Finance (Investments) with Year Abroad

BSc Finance (Sustainable Finance)

BSc Finance (Sustainable Finance) with Placement Year

For full progression details, please visit [oncampus.global](https://oncampus.global)



BSc Finance (Sustainable Finance) with Year Abroad

BSc Finance with Placement Year

BSc Finance with Year Abroad

BSc Food Business and Marketing

BSc Food Business and Marketing with Placement Year

BSc International Business and Management

BSc International Business and Management with Placement Year

BSc International Business and Management with Year Abroad

BSc International Business and Management with a Modern Language

BSc International Business and Management with a Modern Language with Placement Year

BSc International Business and Management with a Modern Language with Year Abroad

BSc International Development

BSc International Development with Placement Year

BSc Real Estate

BSc Real Estate Finance

BSc Real Estate with MSC Diploma in Urban Planning & Development

## Engineering and Physical Sciences pathway

**English Required** OCTOE - internal assessment: 65%

**Pass Mark** for progression academic modules: Dependent on degree, please see [oncampus.global](https://oncampus.global)

BSc Agriculture	BSc Food Technology with Bio Processing with Industrial Training
BSc Agriculture with Placement Year	BSc Nutrition
BEng Architectural Engineering	BSc Nutrition & Food Science
BEng Biomedical Engineering	BSc Nutrition & Food Science with Professional Training
BSc Building Surveying	BSc Nutrition with Professional Training
BSc Computer Science	BSc Quantity Surveying
BSc Computer Science with Industrial Year	MEng Architectural Engineering
BSc Construction Management	
BSc Construction Management and Surveying	
BSc Environmental Science	
BSc Environmental Science with Professional Experience	
BSc Food Science	
BSc Food Science with Industrial Training	
BSc Food Technology with Bio Processing	

### Medical and Life Sciences pathway

**English Required** OCTOE - internal assessment: 65%

**Pass Mark** for progression academic modules: Dependent on degree, please see [oncampus.global](https://www.oncampus.global)

BSc Biochemistry	BSc Microbiology with Professional Experience
BSc Biochemistry with Professional Experience	BSc Pharmaceutical Chemistry
BSc Biological Sciences	BSc Pharmaceutical Chemistry with a Year in Industry/Research
BSc Biological Sciences with Professional Experience	BSc Pharmacology
BSc Biomedical Sciences	BSc Pharmacology with a year in Industry
BSc Biomedical Sciences with Professional Experience	BSc Psychology
BSc Bioveterinary Sciences	BSc Psychology and Language Sciences
BSc Bioveterinary Sciences with Placement Year	BSc Psychology and Philosophy
BSc Chemistry	BSc Psychology with Neuroscience
BSc Chemistry with a year in Industry/Research	BSc Psychology with Professional Placement
BSc Chemistry with Cosmetic Science	BSc Zoology
BSc Chemistry with Cosmetic Science with a Year in Industry	BSc Zoology with Professional Experience
BSc Ecology and Wildlife Conservation	MChem Chemistry
BSc Ecology and Wildlife Conservation with Professional Experience	MChem Chemistry with a year in Industry/Research
BSc Medical Science	MPAS Physician Associate Studies
BSc Medical Science with Professional Experience	MPharm Pharmacy
BSc Microbiology	MSci Applied Psychology
	MSci Speech and Language Therapy

### Business and Economics pathway

**English Required** OCTOE - internal assessment: 65%

**Pass Mark** for progression academic modules: Dependent on degree, please see [oncampus.global](https://www.oncampus.global)

BA Primary Education with Maths

### All pathways

**English Required** OCTOE - internal assessment: 65%

**Pass Mark** for progression academic modules: Dependent on degree, please see [oncampus.global](https://www.oncampus.global)

BA Education Studies	BSc Geography (Human and Physical)
BA English Language and Linguistics	BSc Geography (Human and Physical) with Professional Experience
BA English Language and Linguistics with Placement Experience	BSc Geography (Human) with Professional Experience
BSc Architecture	BSc Geography (Physical)
BSc Geography and Economics (Regional Science)	BSc Geography (Physical) with Professional Experience
BSc Geography and Economics (Regional Science) with Professional Experience	
BSc Geography (Human)	

### Humanities and Social Sciences pathway

**English Required** OCTOE - internal assessment: 65%

**Pass Mark** for progression academic modules: Dependent on degree, please see [oncampus.global](https://www.oncampus.global)

BA Ancient History	BA Museum Studies and Archaeology with Professional Placement
BA Ancient History and Archaeology	BA Museum Studies and Archaeology with Study Year Abroad
BA Ancient History and Archaeology with Professional Placement	BA Philosophy
BA Ancient History and Archaeology with Study Year Abroad	BA Philosophy and Classical Studies
BA Archaeology	BA Philosophy and International Relations
BA Archaeology and Anthropology	BA Philosophy and Politics
BA Archaeology and Anthropology with Professional Placement	BA Philosophy, Business and Ethics
BA Archaeology and Anthropology with Study Year Abroad	BA Philosophy, Politics and Economics
BA Archaeology with Professional Placement	BA Politics and International Relations
BA Archaeology with Study Year Abroad	BA Politics and International Relations with Placement Year
BA Classical Studies	BA Primary Education (QTS)
BA Classics	BA Spanish and International Development
BSc Criminology	BA War, Peace and International Relations
BA Ethics, Value and Philosophy	BA War, Peace and International Relations with Placement Year
BA French and International Development	LLB Law
BA Italian and Classical Studies	
BA Modern Languages (3 year)	
BA Modern Languages (4 year)	
BA Modern Languages and Business	
BA Modern Languages and Economics	
BA Modern Languages and English Language	
BA Modern Languages and History	
BA Modern Languages and International Relations	
BA Museum and Classical Studies	
BA Museum Studies and Archaeology	



All **ONCAMPUS** Reading Undergraduate Foundation Programme pathways (excluding Art & Design and Business) are delivered from **ONCAMPUS** London. Please scan QR to visit our website for more details.

# Master's degrees you could progress to

Students who successfully complete their **ONCAMPUS** programme, and meet the required entry criteria will have the opportunity to progress onto one of the following postgraduate degrees at the University of Reading:

## Business pathway

English Required AELD - internal assessment: 65%

Pass Mark for progression academic modules: Dependent on degree, please see [oncampus.global](https://oncampus.global)

MSc Accounting, Financial Management and Digital Business	MSc International Human Resource Management
MSc Climate Change, Sustainable Business and Green Finance	MSc Investment Management
MSc Digital Business and Data Analytics	MSc Management
MSc Digital Innovation	MSc Marketing (International Marketing)
MSc Digital Marketing	MSc Marketing (Sustainable Marketing)
MSc Entrepreneurship and Innovation	
MSc Finance	
MSc Finance and Financial Technology (FinTech)	
MSc International Accounting and Finance	
MSc International Business	
MSc International Business and Finance	

## Economics pathway

English Required AELD - internal assessment: 65%

Pass Mark for progression academic modules: Dependent on degree, please see [oncampus.global](https://oncampus.global)

MSc Agricultural Economics	MSc Food Economics and Marketing
MSc Business Economics	MSc Public Policy
MSc Development Finance	
MSc Economics	

## Art and Design pathway

English Required AELD - internal assessment: 65%

Pass Mark for progression academic modules: Dependent on degree, please see [oncampus.global](https://oncampus.global)

MA Communication Design	MA Fine Art
MA Communication Design: Book Design Pathway	MA Film and Creative Enterprise
MA Communication Design: Graphic Design Pathway	
MA Communication Design: Information Design Pathway	
MA Communication Design: Typeface Design Pathway	

For full progression details, please visit [oncampus.global](https://oncampus.global)



# How ONCAMPUS Works

Our programmes at **ONCAMPUS** Reading are designed for international students who do not meet the requirements for direct entry to the University of Reading. We'll support you as you prepare for degree study at the University.

ONCAMPUS Reading Undergraduate Foundation Programme pathways in Engineering, Humanities and Life Sciences are delivered from **ONCAMPUS** London.



## Increase your English language level

- Academic writing skills
- Academic reading skills
- Presentation and discussion skills
- Listening and note-taking

## Improve academic grades and study skills

- Additional year of study equivalent to 13th year of UK study for undergraduate degree
- Demonstrate an academic level that meets university requirements
- Present higher grades in Pathway programme than achieved in high school for undergraduate entry
- Learn the study skills essential for success in UK universities
- Additional research study skills for master's students

## Expert university progression support

- Expert guidance on which degree to progress to
- One-to-one support sessions
- Faculty visits and meetings

## Progress to university degree

# Your route to a degree at the University of Reading

**ONCAMPUS** Reading offers students a guaranteed opportunity for progression onto undergraduate and master's degree programmes at the University of Reading.



About ONCAMPUS

## ONCAMPUS gives you...

### Outstanding teaching and support

Through every step of your journey with us, you will be supported by highly qualified teachers and support staff, both inside and outside the classroom.

Your personal tutor will meet with you regularly to ensure you are on track to pass the programme and progress to your chosen degree.

Your personal tutor is also there to help you with any issues you might have inside or outside the classroom.

### A proven track record of success

**ONCAMPUS** is part of Cambridge Education Group, one of the UK's leading university pathway providers since 1952.

Cambridge Education Group was the first private institution to offer university foundation programmes in the UK in 1985, and successfully prepares thousands of students for the UK's top universities every year.

### Part of the University from day one

The **ONCAMPUS** Reading centre is located at the heart of the London Road campus, close to all of the University's facilities.

Students studying at this campus will receive a University library card, enabling you to borrow books from the University's extensive collection and giving you access to the Library's excellent study spaces.

You will meet your course leader at the University before you start your degree and have the opportunity to try out some of the excellent facilities.



# Guide to Reading



The University of Reading provides a safe and beautiful environment in which to study, with a strong community atmosphere and everything you need on your doorstep. Off campus, there's even more waiting for you. The vibrant town centre boasts a huge variety of restaurants, parks and entertainment, with stunning English countryside close by.



## Reading Festival

is one of the best known in the UK, with more than 105,000 fans flocking to see some of the biggest names in music.



## 25 minutes

to London by train

Reading's new £850m mainline train station is just two miles away and provides direct rail and Overground (Elizabeth Line) links to London and many of the UK's other major cities.



## Wide variety of cultural attractions

including The Hexagon theatre, South Street Arts Centre and the University's Museum of English Rural Life.



More than

# 100



restaurants within town centre

including Indian, Thai, Italian and many more...



Stunning green spaces to explore. The beautiful English countryside is perfect for walking, cycling and socialising.



# 2

 large shopping centres within the town centre

plus regular local markets and a wide range of high street and independent shops.

## SportsPark

Take part in a variety of activities including tennis, badminton, volleyball, basketball, cricket, squash, dance, yoga, football and hockey.



A fabulous multiplex cinema shows all the latest movies in Reading town centre.



Under 3 miles to



Select Car Leasing Stadium

Just 20 minutes by bus or 16 minutes to cycle to this huge sporting stadium from ONCAMPUS Reading.

## Cole Museum of Zoology

Only a three-minute walk from the students' union





# ONCAMPUS Reading CITY GUIDE PAGE



[oncampus.global/reading-city-guide](http://oncampus.global/reading-city-guide)

## DIGITAL MAP



Hexagon Theatre

Broad Street Mall



The Oracle Shopping Centre

Central Jamme Masjid



Vue Multiplex Cinema



The Blade



St James RC Church

Reading Museum & Town Hall



South Street Arts Centre

My River Cruising



Great Hall

Green Banks Building

Wycliffe Baptist Church

Unite Student Accommodation

Markaz Salafi

Museum Of English Rural Life



Whiteknights House



Henley Business School  
UNIVERSITY OF READING

Heathrow Airport  
27 miles

Coley Recreation Ground

River Kennet

Waterloo Meadows

Christchurch Parish Office

Cintra Park

Humanities and Social Sciences Building

**ONCAMPUS**

Blandford Lodge

Library

Whiteknights campus

Reading University Students' Union

Hopkins Building

### Whiteknights campus

ONCAMPUS Reading is based on the main University campus. Set in 130 hectares of stunning parkland, Whiteknights campus offers plenty of places to eat, shop, study and socialise – everything you need is in one place.

It is home to the Library, Reading University Students' Union, two on-site museums, shops, cafes, and other amenities such as 3sixty, a large venue that hosts a variety of student-led events. The campus also houses many teaching and research facilities, including modern, well-equipped study areas.

# Accommodation in Reading

ONCAMPUS aims to make sure that finding a place to live while you study with us is quick and easy. It is very important that you have a place to stay when you arrive in the UK, and while you can choose to organise your own accommodation, we strongly recommend that all students book a room through our free service.

We have two fantastic residences available for you to book in Reading, both offering good value for money. The details below indicate the types of facilities available and the price range you can expect from our accommodation options.



Short distance to  
ONCAMPUS



Wi-Fi  
Access



Laundry  
Room



TV/Games Room



Bike  
Storage



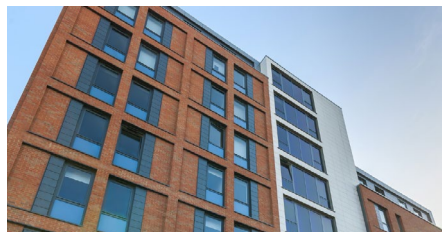
Study Room



24/7  
assistance  
and onsite  
service team



En-Suite  
Rooms



## + Facilities Include:

Study spaces

Vending machine

Rooftop terraces

TVs / Table football

CCTV & secure access

All utility bills included

Wi-Fi

On-Site management

Secure cycle storage

