



OnCampus
Paris

2025-26



KEDGE | Let's be
BUSINESS SCHOOL | the change



istitutomarangoni **m**
enhancing talent since 1920



DOHUS ACADEMY MILANO



ESGCI

IESA
arts&culture



strate
SCHOOL OF DESIGN

oncampus.global

Paris attracts students from around the world looking to experience the unique atmosphere and academic opportunities that the city has to offer. Whether it's the world-ranked universities, impressive architecture, exquisite cuisine or vibrant culture, studying in Paris offers a unique experience for international students.



Paris is ranked
World Top 10 Best
Student City

QS Best Student Cities 2025



France is the
No. 1 global
tourist destination

United Nations World Tourism
Organization

Iconic brands
such as L'Oréal,
Carrefour and
Renault have
headquarters in
France creating
significant career
opportunities

Annual international
degree tuition fees
average €10,000
(Campus France)

Generous post-study
opportunities enable you
to stay and look for
employment in France
on graduation.



"I'd never seen such a beautiful and historical place before in my life. I'm here to study business and the teachers are really helpful and they explain things really well. My friends and I always make plans and it's really easy to explore."

Mubashrah, Pakistan

Établissement d'Enseignement Supérieur
Privé (Private Higher Education Institution)

Contents

Reaching a top French Institution

About OnCampus Paris

Which OnCampus Paris programme is right for you?	4
Find your place at a top French institution	6
Studying Business in Paris	8
Studying Fashion Business in Paris	16
Studying towards creative degrees	26
Degrees you can progress to	36

Our Programmes

International Foundation Programme (IFP)	42
International Year One (IY1)	44
International Pre-Master's Programme (IPMP)	46

Find your place

Guide to Paris	48
Discover France	50
Accommodation in Paris	53

Which OnCampus Paris programme is right for you?

Whether you know what course you want to study or need additional support from our experienced higher education and progression team, we're here to help you every step of the way.

The course that's right for you will depend on your English level and the number of years of school you've completed. The chart below shows your options but our team will be happy to help you if you're unsure.



*Depending on country of study
Information on Master's programmes on page 46

Exceptional support to make your application

Choosing the right university is one of the most important decisions you will make. At OnCampus Paris, our expert Higher Education Advisors will give you all the information, guidance and support to make this decision from the start of your programme.

Undergraduate degrees

- | Term | Support |
|----------|--|
| 1st Term | Regular meetings with progression partner advisors
Open days and guest lectures
Application fee waiver |
| 2nd Term | Interview practice
Academic reference
Taster lectures and talks |
| 3rd Term | Review your offers
Support to choose a second option if needed |

Master's degrees

- Expert university application support
- Guidance on researching degree programmes
 - Support with your Statement of Purpose
 - Academic CV workshop
 - Online application support
 - Advice on choosing and confirming your offers



Find Your Place at a top French institution

OnCampus Paris has connected many international students with their ideal university or Grande École in France or Europe. Our students progress to a range of business, fashion, management and creative arts-related degrees at our trusted partners, universities within France or those further afield in Europe.

1. Guaranteed progression

When you pass our programme, you have a choice of guaranteed progression to a range of degrees at world-leading partner institutions. If you are aiming for progression to one of our partners, you'll receive a conditional offer from them alongside your offer to study at OnCampus Paris.

2. Career focused

Our programmes align with your career goals, providing work experience and industry connections through our partner universities. You'll have opportunities to join our Student Ambassador scheme, become a Content Creator or a class Student Rep to help build your confidence, grow your friendship group and develop those leadership skills before you start your degree.

3. Personalised support

Our dedicated team is here to assist you from application through to university and beyond. We ensure smooth progression to your degree programme, offer excellent accommodation options and expert visa support. When you start at OnCampus Paris you'll have a fun-filled induction week helping you to get to know the area, we'll help you with registering with a doctor and ensure you're fully settled in your new home.



"I'm a fashion designer and I came to Paris to learn the European way to make clothes but my main goal is to become an entrepreneur and so was attracted to KEDGE for its Sustainable Entrepreneurship degree. I've enjoyed everything about the OnCampus programme and it's motivating being based at KEDGE as you feel part of the School before you've even progressed."

Bernice, Nigeria
Studied the International Foundation Programme

OnCampus Paris's Higher Education Progression and Support Team will be on hand from day one, helping you find and apply to the right institutions for you. We'll support with university applications, your personal statement, practice interviews and anything else you're unsure of.

100%
of students
were eligible for
progression from
OnCampus Paris
programmes in its
first year



Studying Business in Paris

Home to some of Europe's finest business schools and largest purpose-built business district. This 'best of both worlds' quality goes a long way to explaining why the country draws in so many aspiring international students.

Popular careers include

- Banking and Finance
- Management
- Business Administration
- Data Analytics
- Global Supply Chain
- Purchasing
- Luxury Brand
- International Trade and Logistics

KEDGE Business School is a leading Grande École, part of an elite group of institutions providing specialised degrees that give students a route to the top professions and the best possible career outcomes. It holds triple accreditation and ranks among the best business schools in Europe.



Popular progression degrees

- KEDGE Bachelor
- International BBA
- MSc Banking & Finance
- International MBA
- Masters in Management (MIM)
- Grande Ecole
- MSc Data Analytics for Business
- MSc Marketing
- MSc International Trade & Logistics
- ISLI – Global Supply Chain Management
- MAI – International Purchasing & Innovation Management
- MSc Wine & Hospitality Management

Top 10

best French business school

Financial Times 2023



€42,000

average KEDGE graduate
starter salary

99%

of KEDGE students are hired
within six months

Annual tuition fees at
KEDGE start from €9,500

Degrees taught in English

Triple accredited KEDGE ranks among the
best business schools in Europe



341
partner universities

worldwide offering
exchange or double degree
opportunities whilst you study

A 150+ year-old institution
with an international reach



Founded in 1974, Paris School of Business is a double accredited, Grande École offering a range of Higher Education programmes fully taught in English.

With a unique teaching approach that combines interdisciplinary skills and multicultural experiences, programmes aim to train leaders capable of securing strategic positions within international companies and managing multicultural teams, equipped to tackle the complex challenges of today's global economy.

With over 4,000
students and nearly
20,000 alumni

Top 10

MSc in Arts & Cultural Management

18,846+ Alumni

Popular degrees

Bachelor in Management
Master in International
Management
MSc International Finance
MSc in Arts & Cultural Management
MSc in Hospitality & Tourism
Management
MSc in Luxury & Fashion Management



100+ teacher-researchers



ESGCI

ESGCI is a business school specialising in marketing and commerce, delivering world-class qualifications recognised by the French state.

Founded in 1986, ESGCI places high emphasis on international exposure and provides students with several opportunities for learning global perspectives.

Students achieve this through educational processes: professional projects, internships, work-study programmes, associative projects, proximity and exchanges with stakeholders.



A network of over 100 international university partners provide collaboration opportunities

Top 100 Ranking
for ESGCI's Global MBA.

Financial Times 2023



Popular degrees

BA Marketing and International Relations
MSc International Business

Studying Fashion Business in Paris

Fashion business professionals are the driving force behind a company's tactical and entrepreneurial success. They oversee production, communication, marketing, and retail, with a deep understanding of the fashion landscape. With keen insight, they identify the right strategies to position a brand, collection, or product effectively in the fashion and luxury markets. Their expertise lies in mastering the business side of fashion.

Popular careers include

- Fashion Event Management
- Fashion Management
- Fashion Marketing
- Fragrances and Cosmetics Management
- Luxury Brand Management
- Retail Management
- Fashion Buying and Merchandising
- Purchasing
- Sales and Marketing
- Import/Export
- Distribution



LISAA is the biggest design school in France. With 40 years of experience in teaching Fashion, Graphic Design, Interior Design, Animation and Gaming, it is one of the few schools recognised by the French Ministry of Culture and Communication.

+5000

students and over 40 nationalities

+2000

professional partnerships

Graphic Design & Communication



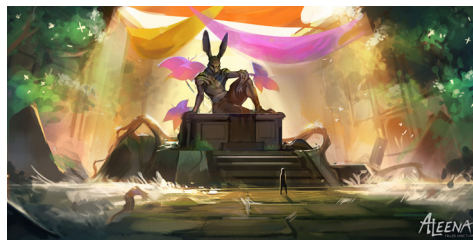
Fashion Design & Business



Interior Architecture & Design



Video Game & Animation



Over 82% of LISAA graduates find employment in the ranked sector in which they completed their training 6 months after leaving school.

Popular degrees include:

- Bachelor Fashion Design / Pattern Making
- Bachelor Fashion Design / Textile Design
- Bachelor Graphic Design or Animation 2D/3D
- Interior Architecture & Design
- BA Fashion Business
- MA Fashion Design & Brand Creation
- MA Interior Architecture
- Master International Fashion Marketing
- Master International Artistic Director

With a history of excellence in higher education for over 85 years, Istituto Marangoni is a group of creative and innovative accredited Higher Education Institutes of fashion, design, art, fragrances and cosmetics located in the most iconic capitals of luxury.

Studying at Istituto Marangoni is like stepping into a glamorous world of fashion, design, and art. It's a place where dreams of becoming a fashion icon come to life.



89%

job placements rate with 70% of graduates working in the leading industries as top professionals.



Popular degrees include:

- BA Fashion Business
- BA Fashion Design
- BA Fashion Management
- BA Fashion Styling & Creative Direction
- BA Fragrances and Cosmetics Management
- BA Product Design
- BA Visual Design
- MA Luxury Accessories Design
- MA Fashion Buying and Merchandising
- Master Fashion Promotion, Communication & Digital Media
- Master Luxury Accessories Design
- Master Fashion & Luxury Brand Management

Top 100

in the world for Art & Design

QS World University Subject Rankings

Founded in 1980, NABA is a top Italian International Art and Design academy.

Studying at NABA opens the door to a world of artistic exploration and creative discovery. With over 40 years of experience in nurturing talent, NABA offers a dynamic environment where students can fully immerse themselves in their chosen field of art and design.

Top 100

Art and Design school in the world

Le Journal Arts 2018

90+ nationalities represented



35%

International Students

Collaborate with brands like RollingStone, Lego, Porsche, Etihad Airways, Pandora and more.



Based in Milan

It is the largest Art & Design school in Italy

Top degrees

- BA Fashion Design
- BA Fashion Marketing Management
- BA Graphic Design and Art Direction
- BA Creative Technologies
- MA Fashion and Costume Design
- MA Fashion Digital Marketing
- MA User Experience Design
- MA Interior Design



DOMUS ACADEMY MILANO



Popular degrees

Bachelor of Arts in Design
Bachelor of Arts in Fashion Design
MA Design Innovation
MA Fashion: Design, Art and Technology
MA Fashion Styling and Visual Merchandising
MA Luxury Brand Management
MA Fashion Management
MA Fashion Design



Established in 1982 in Milan, Domus Academy stands as one of Italy's pioneering post-graduate design schools. It provides the new generation of talent with design visions to prepare them to become the next leaders and system game-changers.

With 4000 students from over 50 countries studying at Domus, the campus is a truly vibrant, multicultural environment. It also features several world-class facilities including design and fashion labs.



93%

international students
from more than 50
different countries.

Top 150

in the world for Art & Design

QS World University Subject Rankings 2023

Studying towards creative degrees

There is an array of creative arts careers that span performing arts management to confectionery arts and entrepreneurship and a need for skilled creative artists that continues to grow.





Atelier Chardon Savard is a leading fashion school based in Paris. Students will be at the forefront of fashion, studying in one of the fashion capitals of the world at the innovative and inspirational, Atelier Chardon Savard.

Via the various courses and programmes, as well as after graduation, students and former students benefit from the school's key network of fashion companies and professionals.



170 industry partnerships

Ranked 5th
Best Fashion School in France
L'Etudiant 2019



Over 80%
employability in fashion

90+
Nationalities represented



IESA

arts&culture

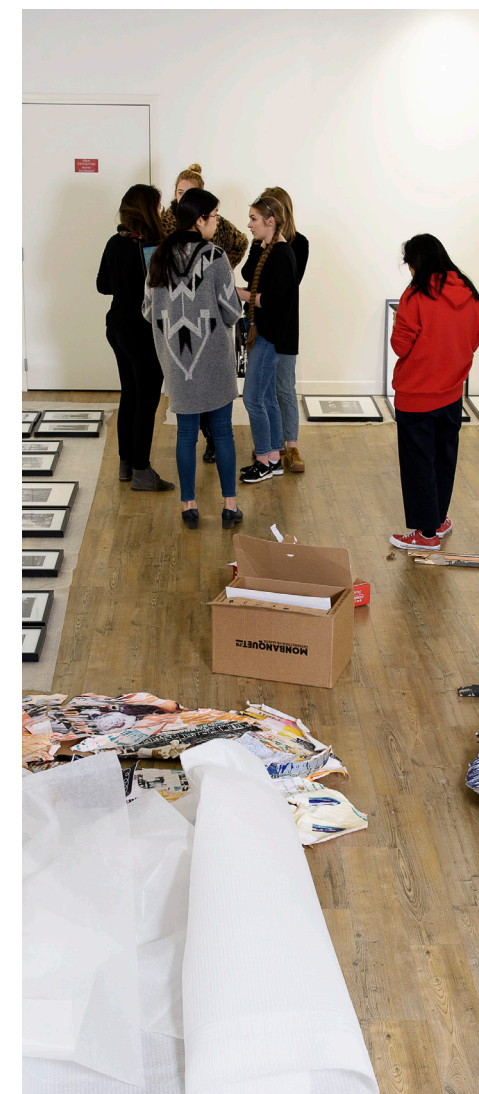
Popular degrees

Bachelor in Arts Management
MBA Arts and Cultural Management
MBA Contemporary Art

IESA Arts and Culture is a fantastic, prestigious art school located in central Paris. It is a private institution of higher education specialising in the management of the arts and production.

IESA also hosts an international research centre dedicated to arts and culture to help students set up partnerships and carry out projects.

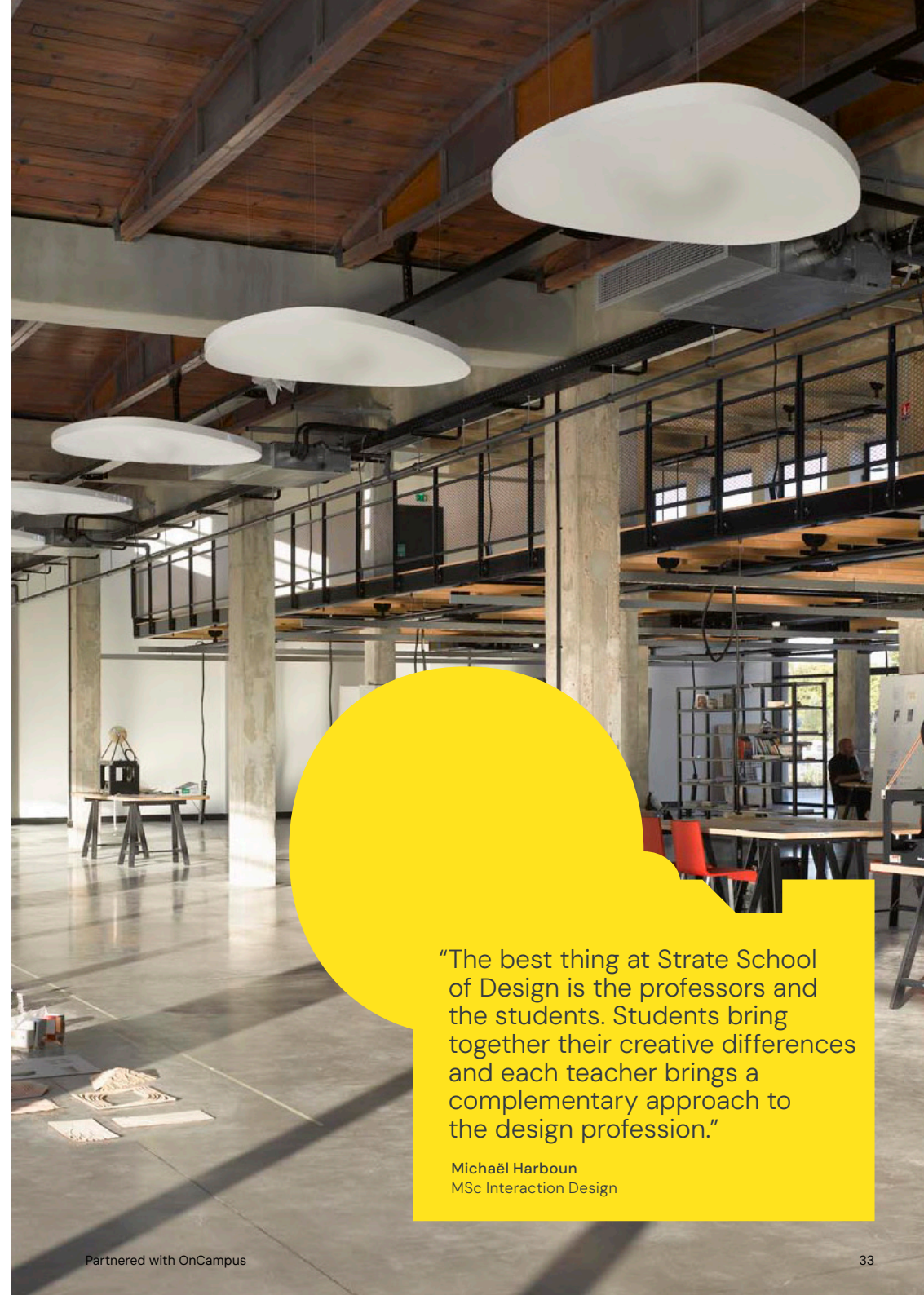
30
artistic and cultural events
are organised by the school
each year



500 partners,
including cultural
institutions,
businesses and art
galleries.

Strate School of Design, renowned in France and internationally, trains design professionals who will positively impact the future.

Strate has been a member of the international association CUMULUS since May 2000, a collection of 257 universities and schools of higher education in art, media and design from 54 countries. It is also a member of The World Design Organisation, providing an international platform to students.



"The best thing at Strate School of Design is the professors and the students. Students bring together their creative differences and each teacher brings a complementary approach to the design profession."

Michaël Harboun
MSc Interaction Design

Institut Culinaire de France is a private higher education school that trains students in the fields of French cooking, pastry and baking.

Students have gone on to be head bakers, chocolatier confectioners, pastry chefs, glaciers, touriers, entremétiers, development managers and more.

Students will be taught by world-leading experts within Institut Culinaire de France led by the world-famous pastry chef Pierre Hermé and an educational team comprised of the best chefs and expert educators in their respective fields.



Popular degrees
Confectionery Arts and
Entrepreneurship



Degrees you can progress to

Use this table to check which OnCampus Paris partners offer degrees in your chosen subject area. Visit our website www.oncampus.global for a full list of all degrees available.

Progression degrees are subject to change. View the full list of degrees you can progress to here

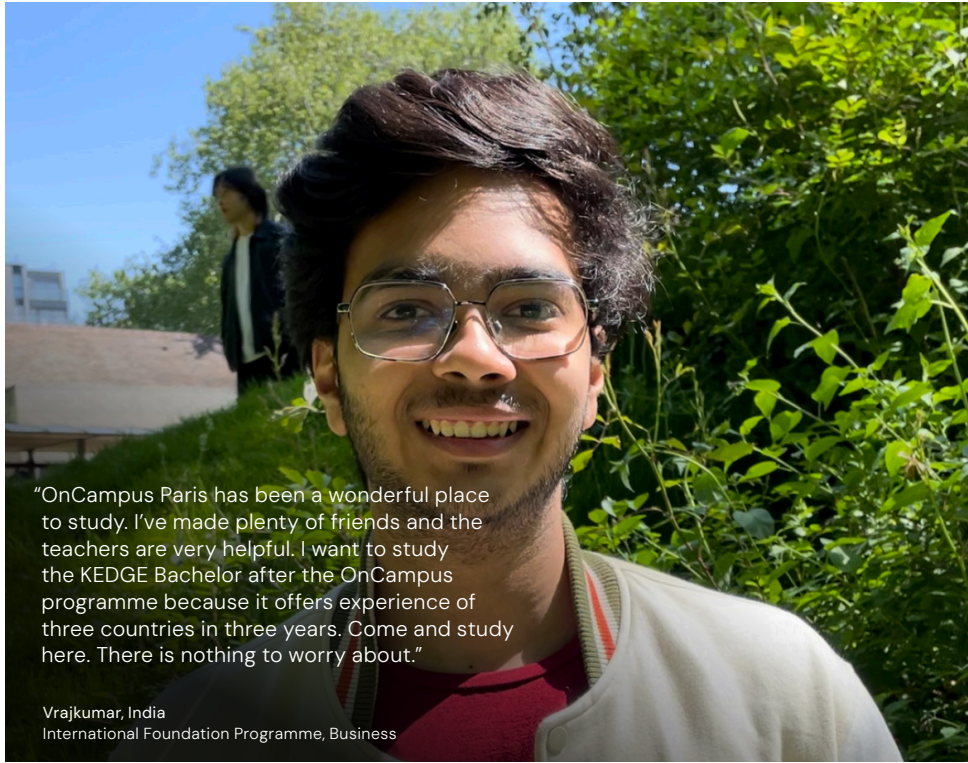


	KEDGE Business		LISAA		Istituto Marangoni		NABA		Domus Academy		Paris School of Business		Strate School of Design		Atelier Chardon		IESA		Institute Culinere		ESGCI	
	UG	PG	UG	PG	UG	PG	UG	PG	UG	PG	UG	PG	UG	PG	UG	PG	UG	PG	UG	PG	UG	PG
Animation	•																					
Art & Ecology								•														
Arts & Creative		•																				
Arts & Cultural Management																	•					
Arts & Management															•							
Arts Curating					•																	
Banking & Finance		•																				
Business	•																					
Business Administration	•																					
Business Design									•													
Business Law								•														
Comics & Visual Storytelling						•																
Communication Design					•			•														
Contemporary Art Markets								•									•					
Confectionery Arts & Entrepreneurship																		•				
Corporate Finance		•																				
Creative Advertising								•														
Creative & Design		•																				
Creative Digital Media						•																
Creative Media Production								•														
Creative Technologies								•														
Curating Art & Fashion						•																
Data Analytics for Business		•																				
Design								•		•												
Design Innovation										•												
Digital & Live Performance								•														
Digital Marketing & Sales		•																				
Fashion Business			•			•																
Fashion Design			•	•	•	•	•	•	•	•					•							
Fashion Management						•		•		•												
Fashion Product						•																
Fashion Styling			•							•												
Film & Animation								•														
Fine Jewellery Design						•																

	KEDGE Business		LISAA		Istituto Marangoni		NABA		Domus Academy		Paris School of Business		Strate School of Design		Atelier Chardon		IESA		Institute Culinere		ESGCI	
	UG	PG	UG	PG	UG	PG	UG	PG	UG	PG	UG	PG	UG	PG	UG	PG	UG	PG	UG	PG	UG	PG
Fragrances & Cosmetics						•																
Global supply chain Management		•																				
Graphic Design			•				•															
Hospitality Management																						
Interior Architecture					•																	
Interior Design						•	•		•		•											
International Business		•																				
International Management																			•			
International Finance																			•			
Italian Design								•														
Jewellery Design						•																
Luxury Brand Management						•				•		•										
Management		•										•										
Marketing		•											•								•	
Multimedia Arts						•																
New Urban Design								•														
Painting & Visual Arts							•															
Photography								•														
Product Design										•												
Product & Service Design									•													
Screenwriting									•													
Set Design							•															
Social Design								•														
Sustainable Innovation Communication								•														
Sustainability & Business Development													•									
Textile Design									•													
Transportation Design															•							
Urban Vision & Architectural Design										•												
User Experience Design									•													
Visual Arts									•													
Visual Design									•													
Wine & Hospitality		•																				
Wine & Spirits Management		•																				

OnCampus Programmes





OnCampus gives you...



Outstanding teaching and support

Through every step of your journey with us, you will be supported by highly qualified teachers and support staff, both inside and outside the classroom.

Your personal tutor will meet with you regularly to ensure you are on track to pass the programme and progress to your chosen degree.

Your personal tutor is also there to help you with any issues you might have inside or outside the classroom.

A proven track record of success

OnCampus is part of Cambridge Education Group, one of the UK's leading university pathway providers since 1952.

Cambridge Education Group was the first

private institution to offer university foundation programmes in the UK in 1985 (and the first to deliver university pathway programmes in France) that successfully prepares thousands of students for the UK and Europe's top universities every year.

Part of the Business School from day one

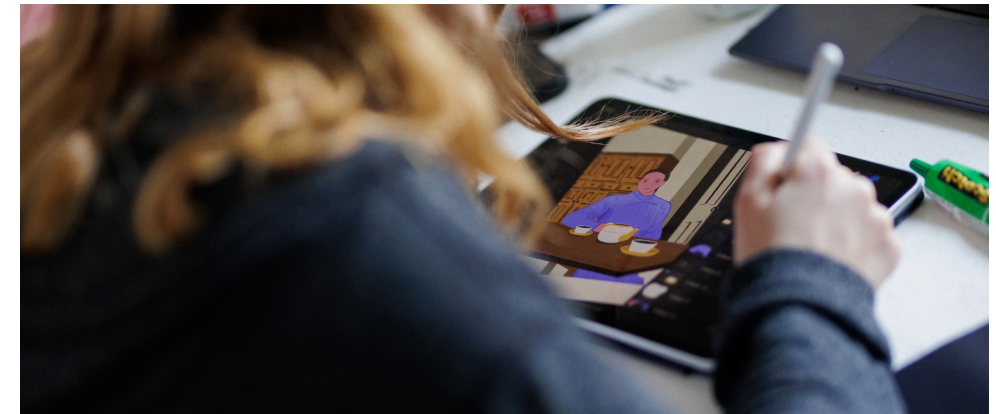
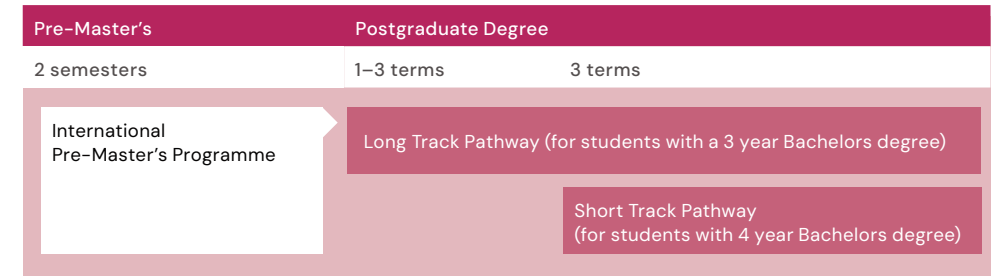
The OnCampus centre is located at the heart

of KEDGE Business School, close to all of its facilities.

You will receive a student card, and with it you will have access to some of KEDGE's facilities, clubs and societies while you study your OnCampus programme.

Your route to a degree

OnCampus Paris offers opportunity for progression to a wide range of undergraduate and postgraduate degrees at leading Institutions, on successful completion of our International Year one, International Foundation or Pre-Master's programmes.



International Foundation Programme (IFP)

Opportunity for progression¹ to Year 1 of a wide range of undergraduate degrees in Business, Creative Arts, Fashion and Management.

Scholarships are available.

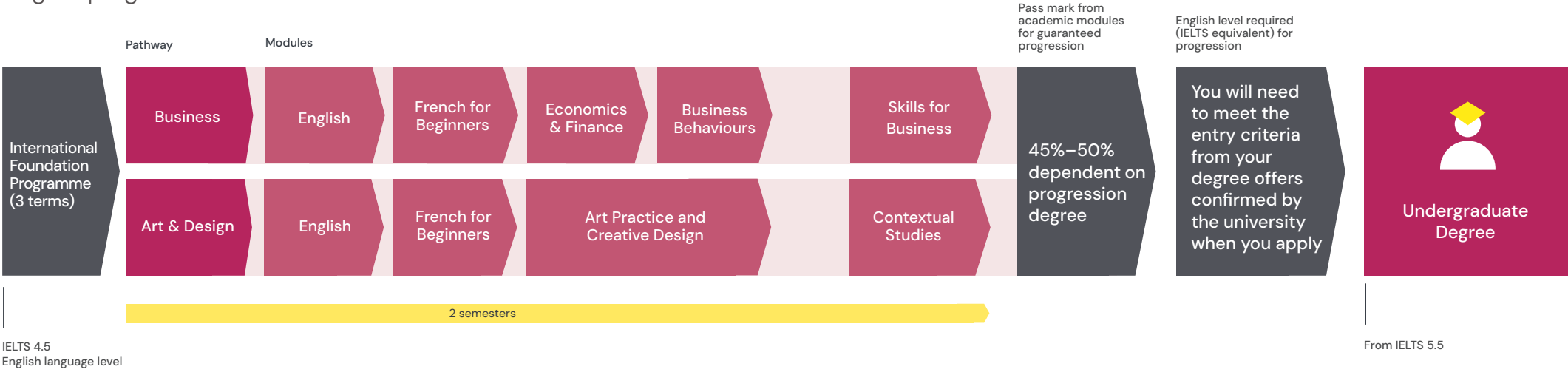
Please contact your representative for more details.



"I chose KEDGE because it was one of the top business schools in Europe. I wanted to have that credibility. All our teachers have different methods of teaching but ultimately will do what is needed to help us understand. Don't be afraid of meeting new people. The chances are, you'll make more family than friends at OnCampus."

Clive, Zambia
International Foundation Programme (IFP)

Degree progression route



Entry Criteria

English level:
From 4.5 IELTS or equivalent

Academic Requirements:
11–12 years
Successful completion of 11–12 years of schooling with good grades.
Please see www.oncampus.global for country-specific academic entry requirements.

Guideline Minimum Age:
17+
Students under 18 are subject to a Guardianship arrangement and an Under 18 Supplement. Students must be 18 at the start of the intended degree programme.

¹ Guaranteed progression is subject to meeting the specified entry criteria and a successful interview.

For progression degrees see page 36–37

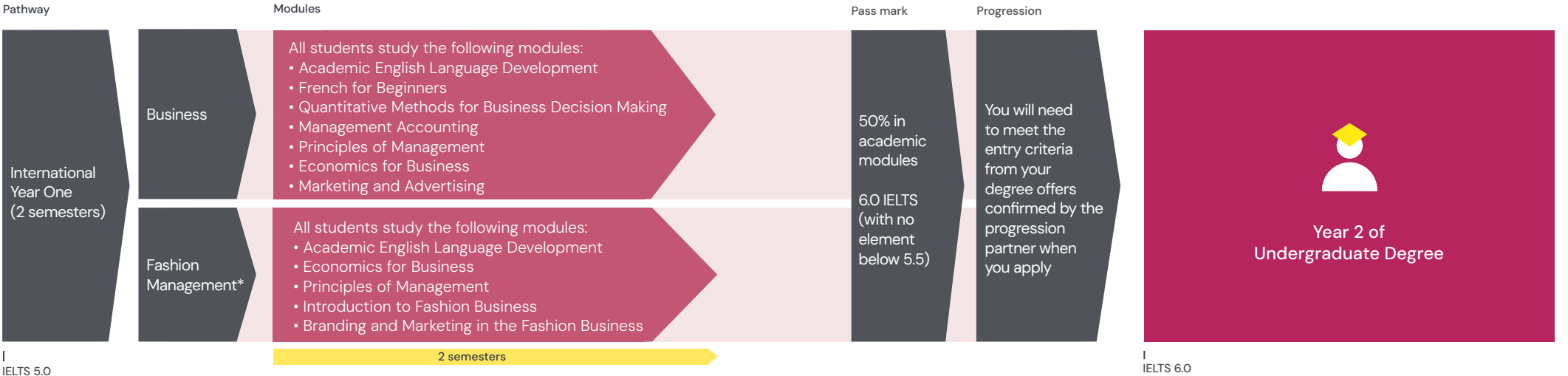
Dates	Duration	Progressing to undergraduate degree starting in
06 January 2025 – 08 August 2025	2 semesters	September 2025
22 September 2025 – 07 June 2026	2 semesters	September 2026
12 January 2026 – 07 August 2026	2 semesters	September 2026

All programmes are subject to a €450 registration fee.
For more information on module content visit our website www.oncampus.global

International Year One (IY1)

This programme offers access to Year 2 of undergraduate degrees in Europe via the European Credit Transfer Scheme.

Degree progression route



Scholarships are available.

Please contact your representative for more details.

Entry Criteria

English level:
From 5.0 IELTS
or equivalent English level with no element below 4.5 (for 2-semester IY1).

Additional English Language Programme
Students who do not meet the entry criteria for the 2-semester programme can take a 1-semester English Language Preparation Programme followed by the 2-semester IY1.

Academic Requirements:
12 years
Successful completion of 12 years of schooling with good grades. Please see www.oncampus.global for country-specific academic entry requirements

Guideline Minimum Age:
17+
Students need to turn 18 by December. Students under-18 are subject to a Guardianship arrangement and under-18 supplement.

For progression degrees see page 36-37

Dates	Duration	Progressing to undergraduate degree starting in
13 January 2025 – 08 August 2025	2 semesters	September 2025
22 September 2025 – 07 June 2026	2 semesters	September 2026
12 January 2026 – 07 August 2026	2 semesters	September 2026

All programmes are subject to a €450 registration fee.
For more information on module content visit our website www.oncampus.global

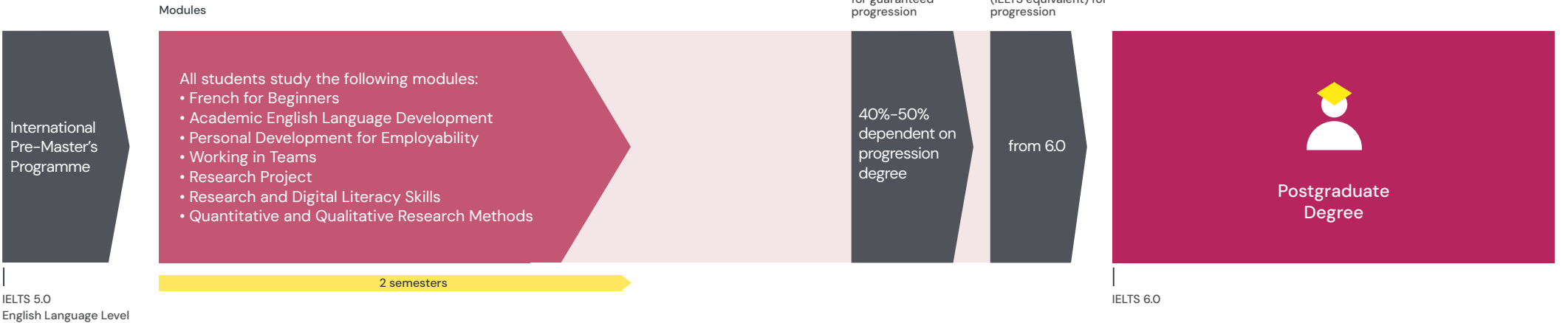
The International Year One is validated by the University of Hull
*subject to validation

UNIVERSITY of HULL

International Pre-Master's Programme (IPMP)

The International Pre-Master's Programme offers guaranteed progression¹ to a wide range of Master's in Business, Creative Arts, Fashion and Management.

Degree progression route



"I've really enjoyed studying here. The support from OnCampus has been great. I chose KEDGE because it was ranked as one of the best for business. I've already been accepted to study MSc in Data Analytics and part of the degree is a 6 month internship and I'm really looking forward to that"

Zhankhaidar, Kazakhstan
International Pre-Master's Programme (IPMP)

Entry Criteria

English level:
From 5.0 IELTS or equivalent

Academic Requirements:
Degree
Successful completion of Bachelor degree or equivalent from a recognised university

Minimum Age:
20+

For guaranteed progression:

- 40%–50% pass mark in academic subjects dependent on progression degree.
- 6.0 IELTS or equivalent

¹ Guaranteed progression is subject to meeting the specified entry criteria and a successful jury interview.

For progression degrees see page 36–37

Scholarships are available.

Please contact your representative for more details.

Dates	Duration	Progressing to undergraduate degree starting in
13 January 2025 – 08 August 2025	2 semesters	September 2025
22 September 2025 – 07 June 2026	2 semesters	September 2026
12 January 2026 – 07 August 2026	2 semesters	September 2026

Guide to Paris



As the capital city of France, Paris is renowned for its romance, culture and iconic landmarks. It is as diverse as it is sophisticated, with a population of over two million people. Paris is Europe's most visited city, making it a very popular tourist destination.

Eiffel Tower

If you're looking for a bird's eye view of Paris, climb the 276m to the top of the Eiffel Tower, possibly the most iconic landmark in Paris, or take in the view from a river boat as you cruise along the Seine.

Museums

From the Centre Pompidou to the Palais de Tokyo (and yes, of course, the Louvre), the French capital has a long list of must-do museums to visit.



Business District La Défense

Located in the west part of the city, La Défense is one of the major business districts in Europe, home to the head offices of the biggest CAC 40 companies, SMEs and startups.



Champs-Élysées

The most beautiful and well-known avenue in Paris. It connects the Arc de Triomphe with the Place de la Concorde and is considered one of the world's most famous commercial streets.

Montmartre

Crowned by the Sacré-Coeur Basilica, historic Montmartre is in the 18th arrondissement and one of Paris's most charming and colourful districts. It is famed for its cobblestone streets, artistic past (and present), and central hill standing at 130m tall.



Release your inner child

and spend a day at one of the world's most renowned theme parks – Disneyland Paris.

Discover France



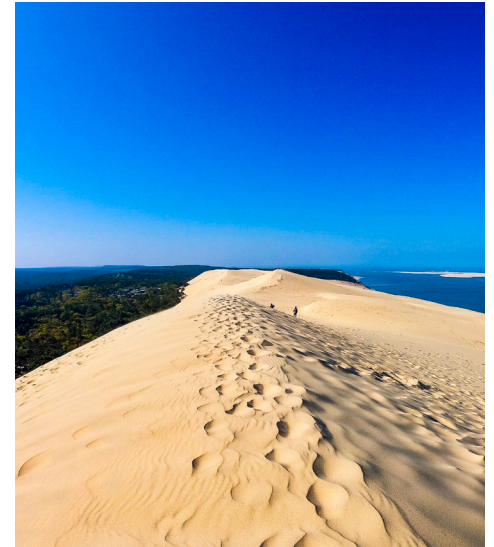
Picturesque Landscapes

French regions such as Provence have inspired famous painters like Picasso, Cézanne and Matisse and offer a great escape from the city. Take a weekend trip and stroll through Avignon or Les Baux de Provence for a slice of heaven.



The French Riviera

Stretching along the Mediterranean coast, this area is popular for its natural beauty and azure-blue waters of the surrounding villages of Cannes, Nice, Eze, and Saint Tropez.



Dune du Pilat

Also called Grande Dune du Pilat, it is the tallest sand dune in Europe, welcoming 2 million visitors a year.

Fairytale Castles and Medieval Towns

The French countryside is dotted with quaint villages and breathtaking landscapes. From the fields of the Loire Valley, to the snow-capped Alps and centuries old harbour towns, France offers some of the most enchanting and picturesque towns and villages in all of Europe.





Accommodation in Paris

Noe Residence is perfectly located in the city. It is an ideal choice for students to enjoy university life to the fullest, but also to easily travel to OnCampus Paris.

Noe Residence offers high quality 19m² studio rooms with private bathrooms and kitchen facilities. Students have access to lots of communal space to meet up and study and/or to socialise including a spacious library and study room, a TV and games room, an outdoor terrace, a gym, and a fitness studio.



To find out more and to book your accommodation visit:
booking.oncampus.global



Facilities include:

- TV room
- Games room (pool table, football table, ping pong)
- Library
- Outdoor terrace
- Basketball court
- Utility bills included
- Wi-Fi and Broadband included
- Laundry facilities (extra charge)
- Room cleaning (extra charge)
- Towels (extra charge)



Short Distance
to OnCampus



Wi-Fi Access



Weekly Cleaning
(Bedsheets)



Games Room



Bike Storage



Communal
Spaces



24hour
Repair Line



En-Suite Rooms